

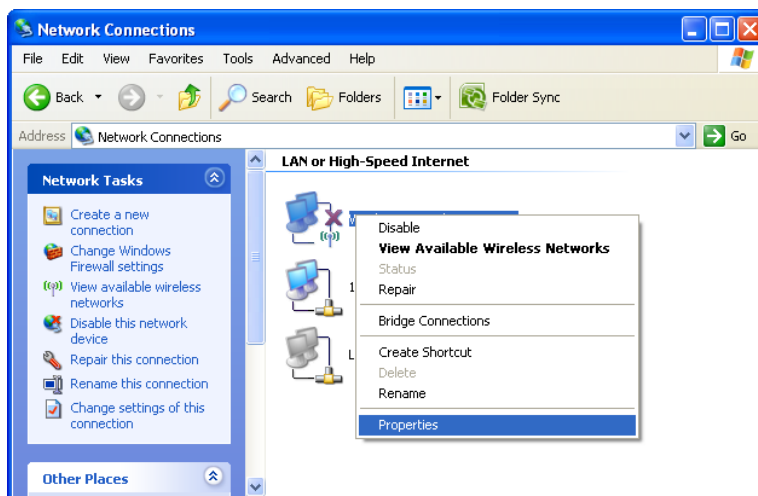


Department of Information Technology

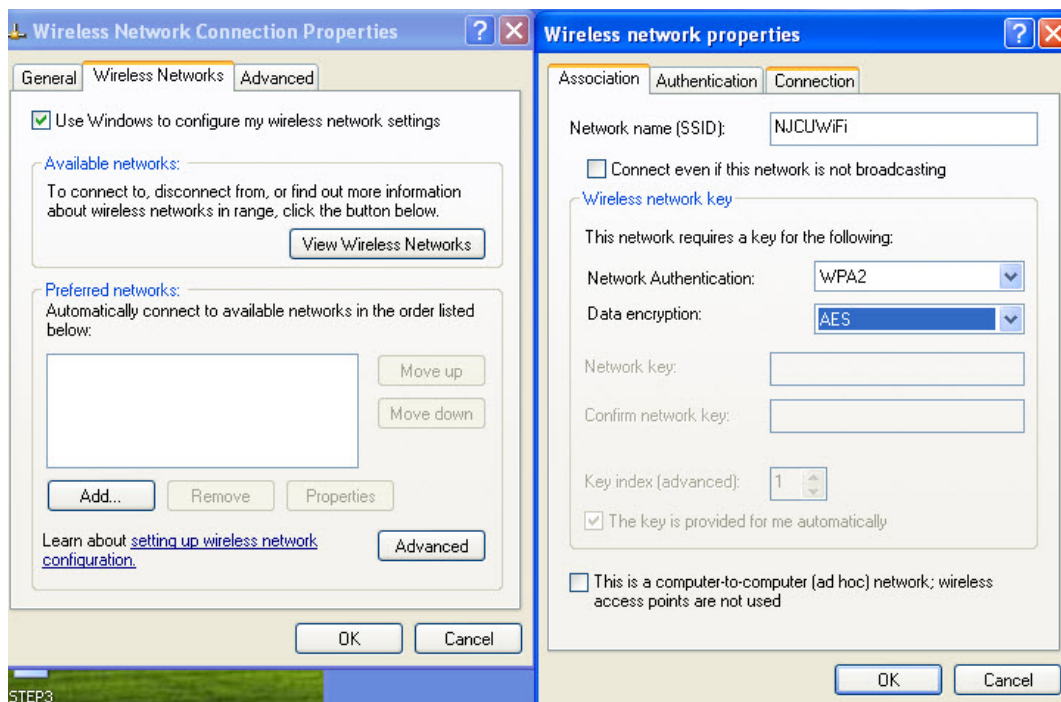
### Windows XP:

These instructions will assist in connecting your Windows XP computer to the “NJCUwifi” network. Please note these instructions are for reference only, and some devices might have varying themes, menu options and might require less or additional steps to be taken to connect.

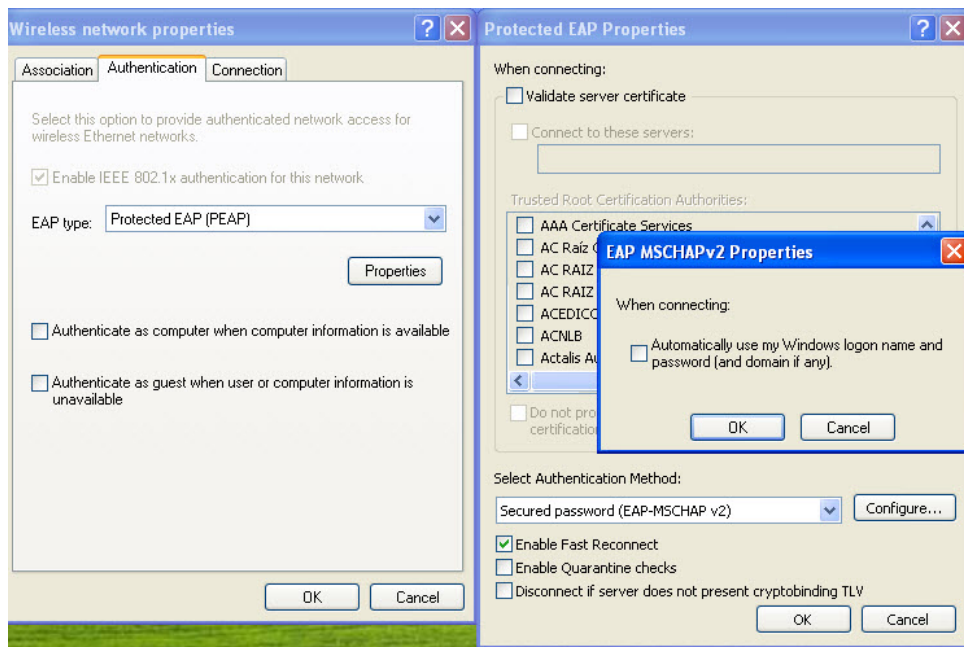
1. Open the Control Panel and Choose Network Connections. Right Click on your wireless adapter and click properties.



- Click the “Wireless Network” tab and choose “add” Enter the information exactly as you see it here. “NJCUWiFi” must be exact.



- Click on the “Authentication” tab and change the EAP type to Protected and uncheck any of the buttons below. Next click on “Properties.” Under Protected EAP Properties uncheck “Validate Server Certificate” and click “Configure” removing the check under “Automatically use my windows logon name and password.”



4. Click “ok”, “ok” and “ok” to save changes. Give windows a moment to save the settings and connect to the “NJCUWifi Network”. You will notice a balloon asking your to enter credentials, click on it.



5. Enter your GothicNet Credentials and click “OK”



6. You are now connected to the “NJCUWifi” Network.

If you require additional assistance, please submit your help request through our [online WiFi Help Form](#).