



# THE DEBORAH CANNON PARTRIDGE WOLFE COLLEGE OF EDUCATION

## ED.D. IN COMMUNITY COLLEGE LEADERSHIP

### Three-Year Online Program



#### Developing Leaders at All Levels

This practice-focused 55-credit online program with 1-week summer institutes is designed to be completed by working professionals in 3 years. Recognizing the need for future leaders in the community college sector, the program aims to develop graduates who:

- Use an evidence-based approach to decision making and leadership, with a focus on the goal of increased rates of student completion and success.
- Promote culturally responsive pedagogical and supportive practices that are grounded in theory and research.
- Engage in partnerships to champion the mission of the community college and lead various reform efforts aimed at reducing equity gaps.
- Effectively engage in strategic planning and assessment and clearly communicate vision and data to various stakeholders.

Graduates may expect to find success as:

- Mid-level and high-level administrators
- Teaching and learning center directors
- Leaders of student success initiatives
- Faculty and student services leaders

#### Unique Features

##### PRACTICE-FOCUSED.

Coursework and dissertation are based on the scholarly-practitioner model, meaning the application of theory and research is emphasized.

##### MENTORING AND EXPERIENTIAL LEARNING.

Students will engage with professional mentors in the field and gain meaningful consulting or project-based learning experiences in the community college setting.

##### HIGH-LEVEL SUPPORT WITH A PROGRAM EVALUATION DISSERTATION.

To ensure timely completion of the dissertation, students will receive individual and course-level guidance as they identify a problem of practice and engage in a rigorous evaluation of the effectiveness of a program, practice, or policy.

##### ONLINE, COHORT-BASED APPROACH.

Engaging and authentic asynchronous online learning experiences combined with occasional live online sessions and a week-long summer institute give students the opportunity to build a sense of community while providing the flexibility that working professionals need.

#### CURRICULUM

YEAR I	YEAR II	YEAR III
<b>Summer</b>	<b>Summer</b>	<b>Summer</b>
Community College Leadership Institute 1	Innovative Teaching Practices and Modalities 3	Strategic Human Resource Management 3
Community Colleges: Past, Present, and Future 3	Mentoring I 1	Mentoring II 1
<b>Fall</b>	<b>Fall</b>	<b>Fall</b>
Leadership Theory and Change Management 3	Educational Research II 3	Curricular and Instructional Leadership 3
The Scholarly Practitioner 3	Strategic Planning, Assessment, and Innovation 3	Student Services Leadership 3
	Experiential Learning I 2	Dissertation in Practice II 2
<b>Spring</b>	<b>Spring</b>	<b>Spring</b>
Promoting Equity: Teaching and Supporting Diverse Adult Learners 3	Community College Finance 3	Legal Issues, Policies, and Ethical Practices in the Community College 3
Educational Research I 3	Experiential Learning II 3	Critical Role of Partnerships in Community College Leadership 3
	Dissertation in Practice I 1	Dissertation in Practice III 2



**INFORMATION:** [njcu.edu/CCLDoctorate](https://njcu.edu/CCLDoctorate)

**APPLICATION DEADLINE:** April 15

**APPLY ONLINE:** [njcu.edu/gradadmissions](https://njcu.edu/gradadmissions)

**TUITION AND FEES:** [njcu.edu/tuition-fees](https://njcu.edu/tuition-fees)

## Ed.D. in Community College Leadership

### Faculty

#### Christine Harrington, Ph.D.

*Associate Professor,  
Co-Coordinator*  
Ed.D. in Community College Leadership  
charrington1@njcu.edu  
732-690-2090 (cell)



#### John Melendez, Ph.D.

*Professor,  
Co-Coordinator*  
Ed.D. in Community College Leadership  
jmelendez@njcu.edu  
908-296-6033 (cell)

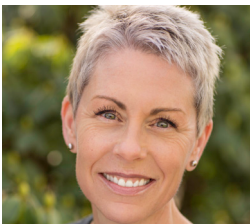
### Advisory Board



**Karen Archambault**  
Vice President, Enrollment  
Management and Student  
Success, Rowan College at  
Burlington County, NJ



**Debra Bragg**  
Director,  
Community College Research  
Initiatives, University of  
Washington, WA



**Elizabeth Cox Brand**  
Executive Director of the  
Oregon Student Success  
Center, OR



**Greg DeSantis**  
Executive Director of the  
Connecticut State Colleges &  
Universities (CSCU) Student  
Success Center and Academic  
Initiatives, CT



**Yolanda Farmer**  
Vice President of  
Student Development,  
Joliet Junior College, IL



**Eric Friedman**  
Executive Vice President  
& Provost,  
Hudson County  
Community College, NJ



**Demond Hargrove**  
Vice President for Student  
Development, Union  
County College, NJ



**Samuel Hirsch**  
Vice President for Academic  
and Student Success,  
Community College of  
Philadelphia, PA



**Hana Lahr**  
Research Associate,  
Community College  
Research Center  
(CCRC), NY



**Mark McCormick**  
President,  
Middlesex County  
College, NJ



**Anthony Munroe**  
President,  
Essex County  
College, NJ



**Lawrence Nespoli**  
Past President of the  
New Jersey Council of  
County Colleges, NJ



**Carlos Nevarez**  
Chair and Professor,  
Graduate & Professional  
Studies in Education,  
CSU-Sacramento, CA



**Paula Pando**  
President,  
Reynolds Community  
College, VA



**Christopher Shults**  
Dean of Institutional  
Effectiveness and Strategic  
Planning, Borough of Manhattan  
Community College, NY



**Bette Simmons**  
Vice President of Student  
Development & Enrollment  
Management, County  
College of Morris, NJ



**Michael J. Sparrow**  
Dean, Enrollment  
Management and Retention,  
Northampton Community  
College, PA



**David Stout**  
President,  
Brookdale Community  
College, NJ