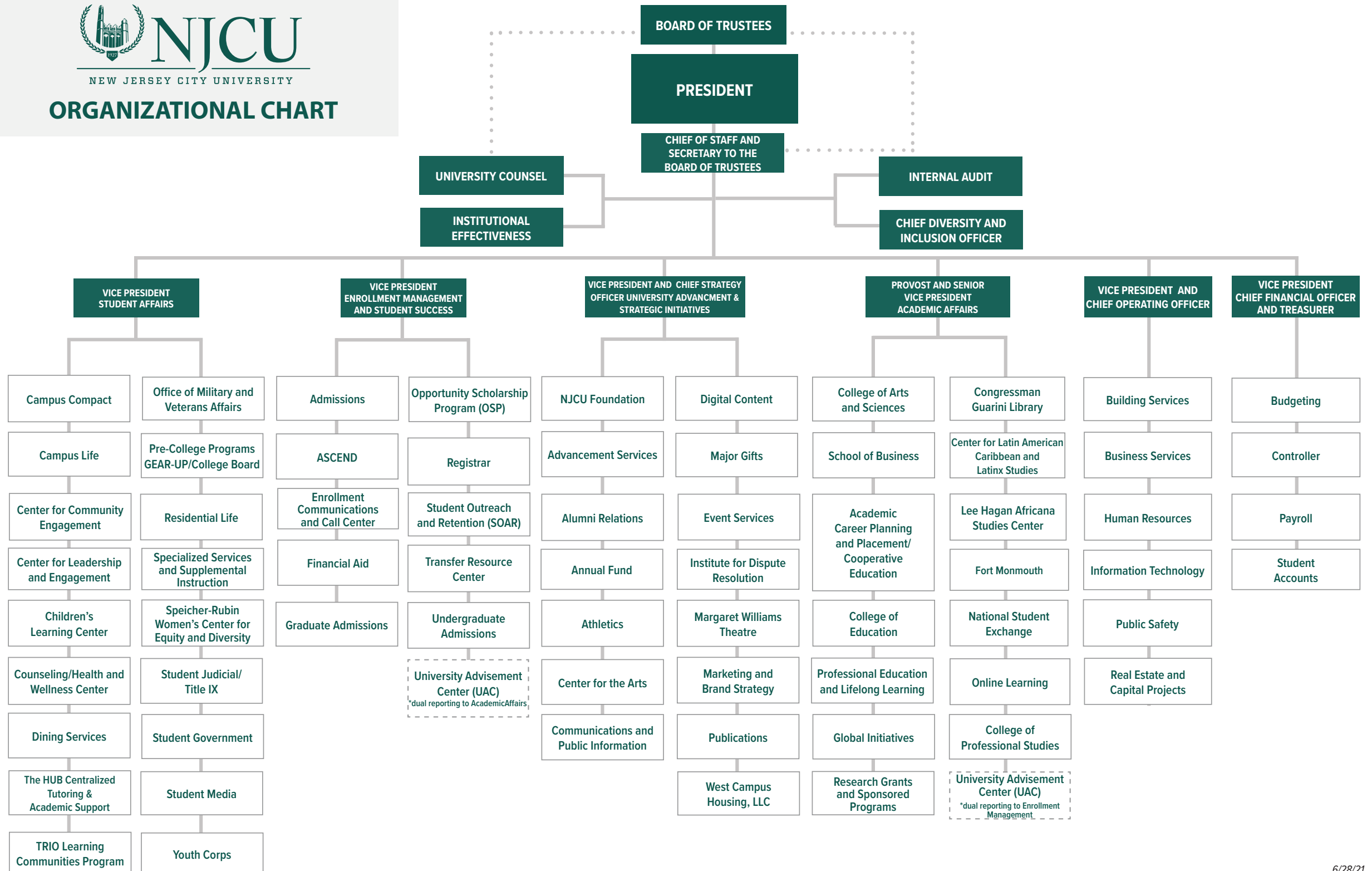


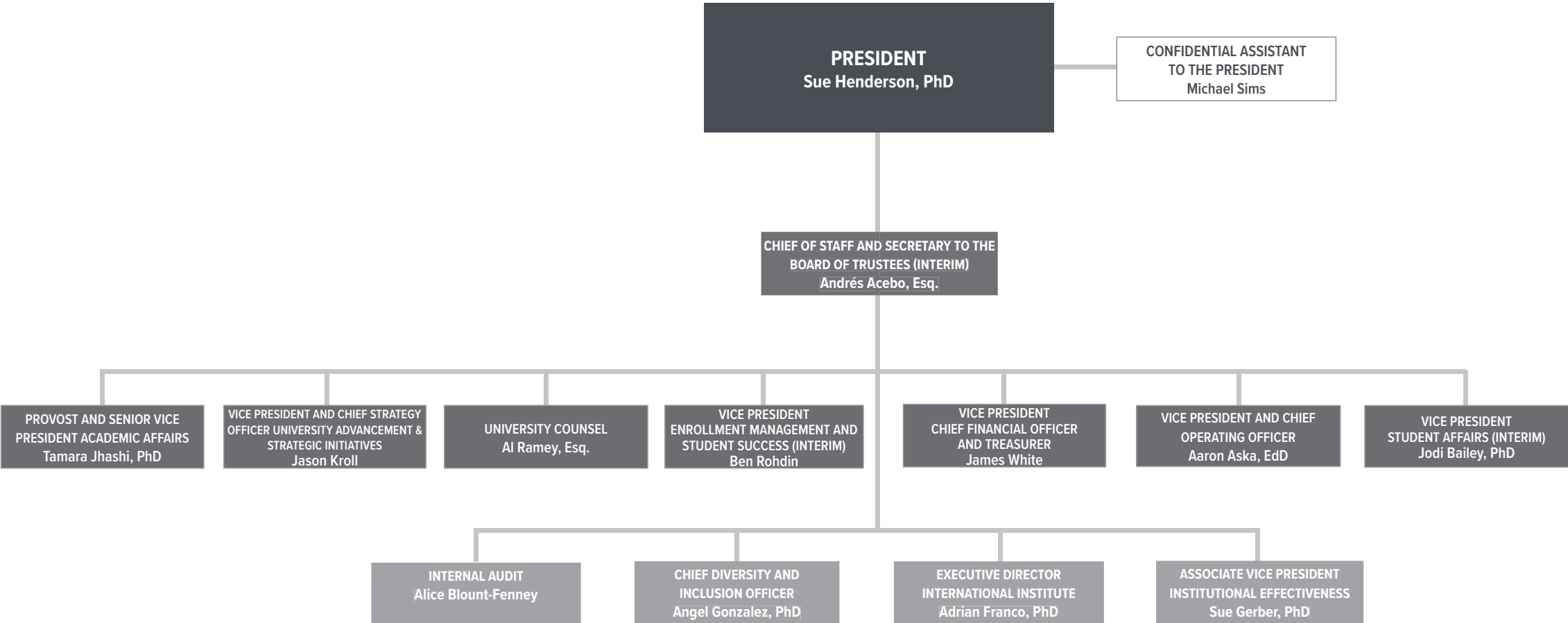


ORGANIZATIONAL CHART



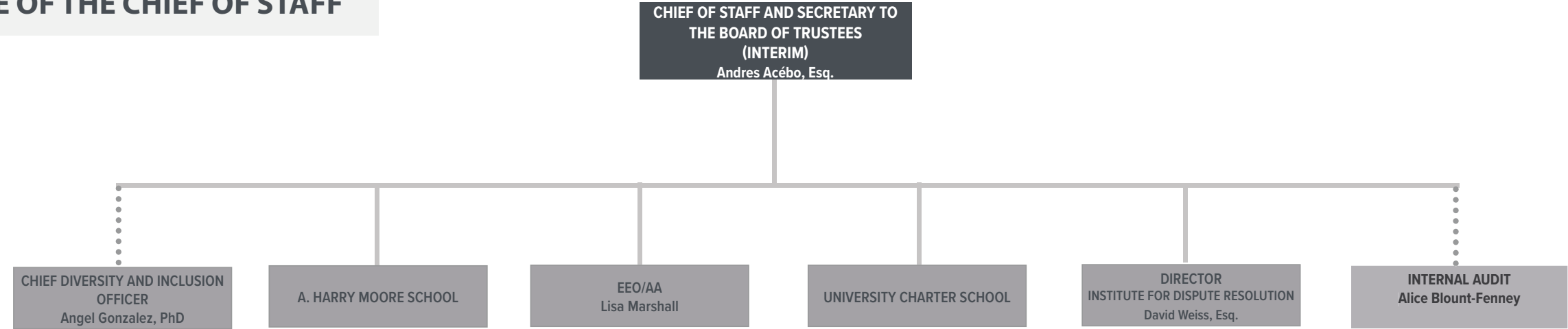


OFFICE OF THE PRESIDENT

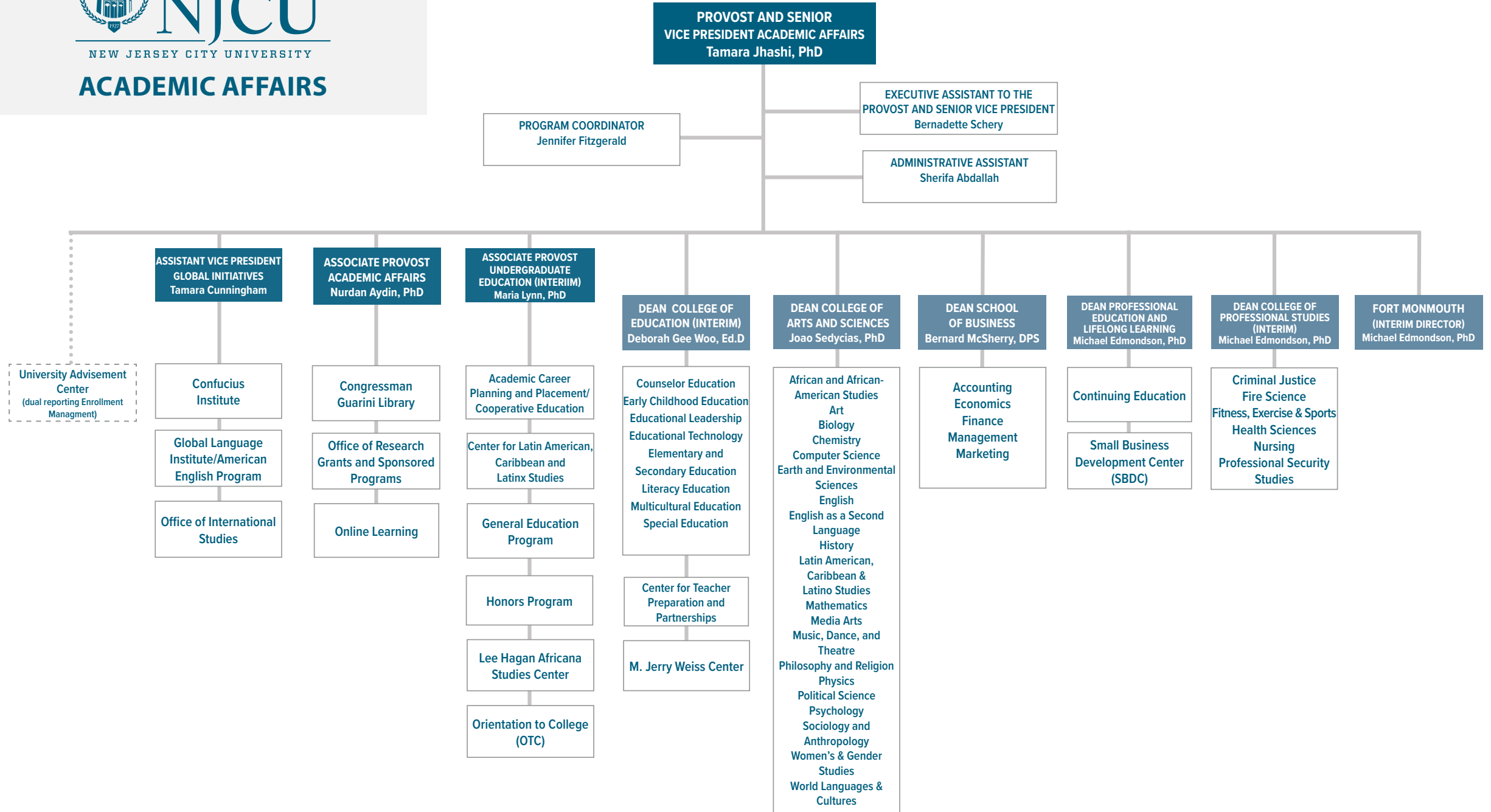




OFFICE OF THE CHIEF OF STAFF

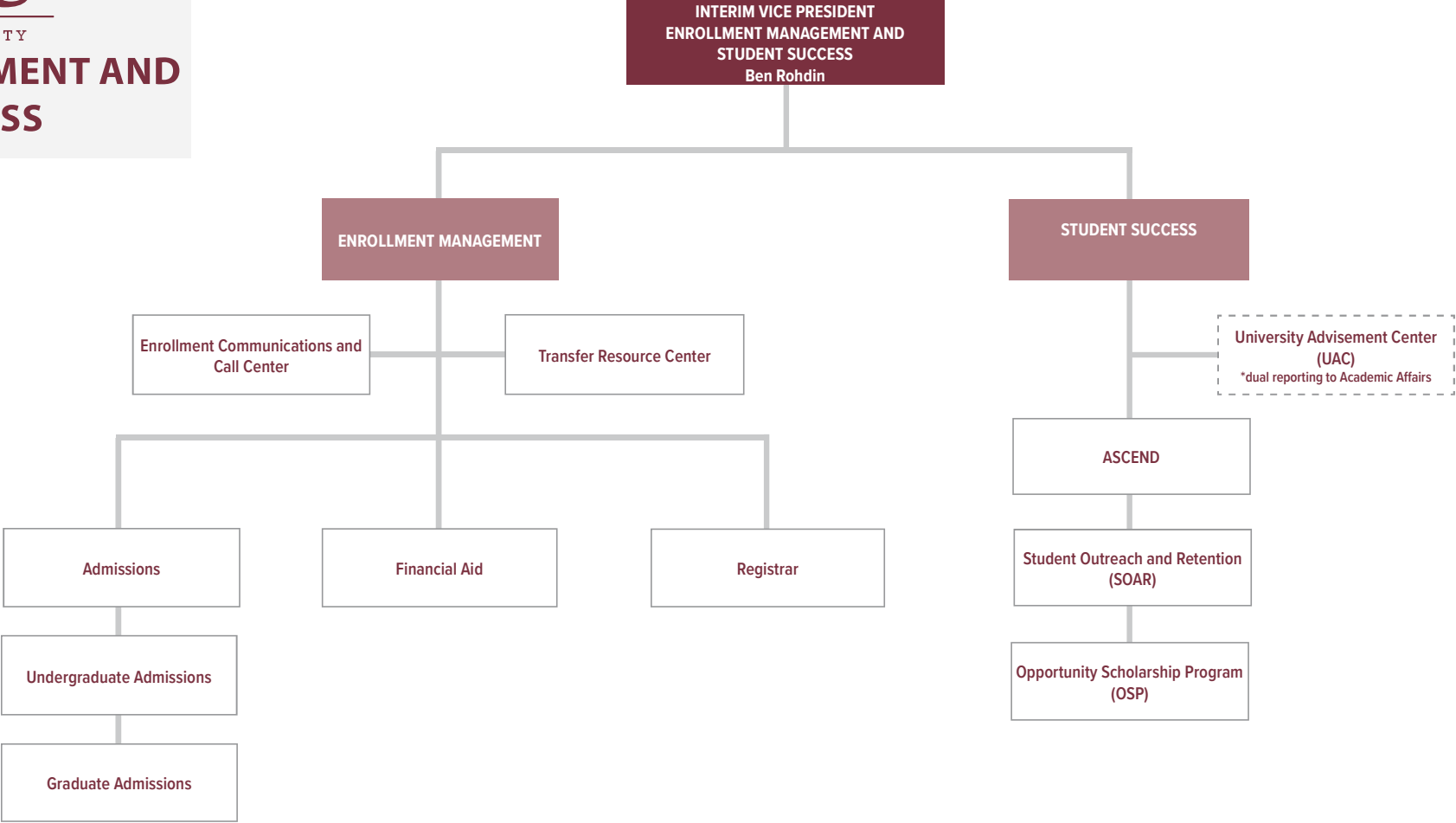


..... = also reports to the President



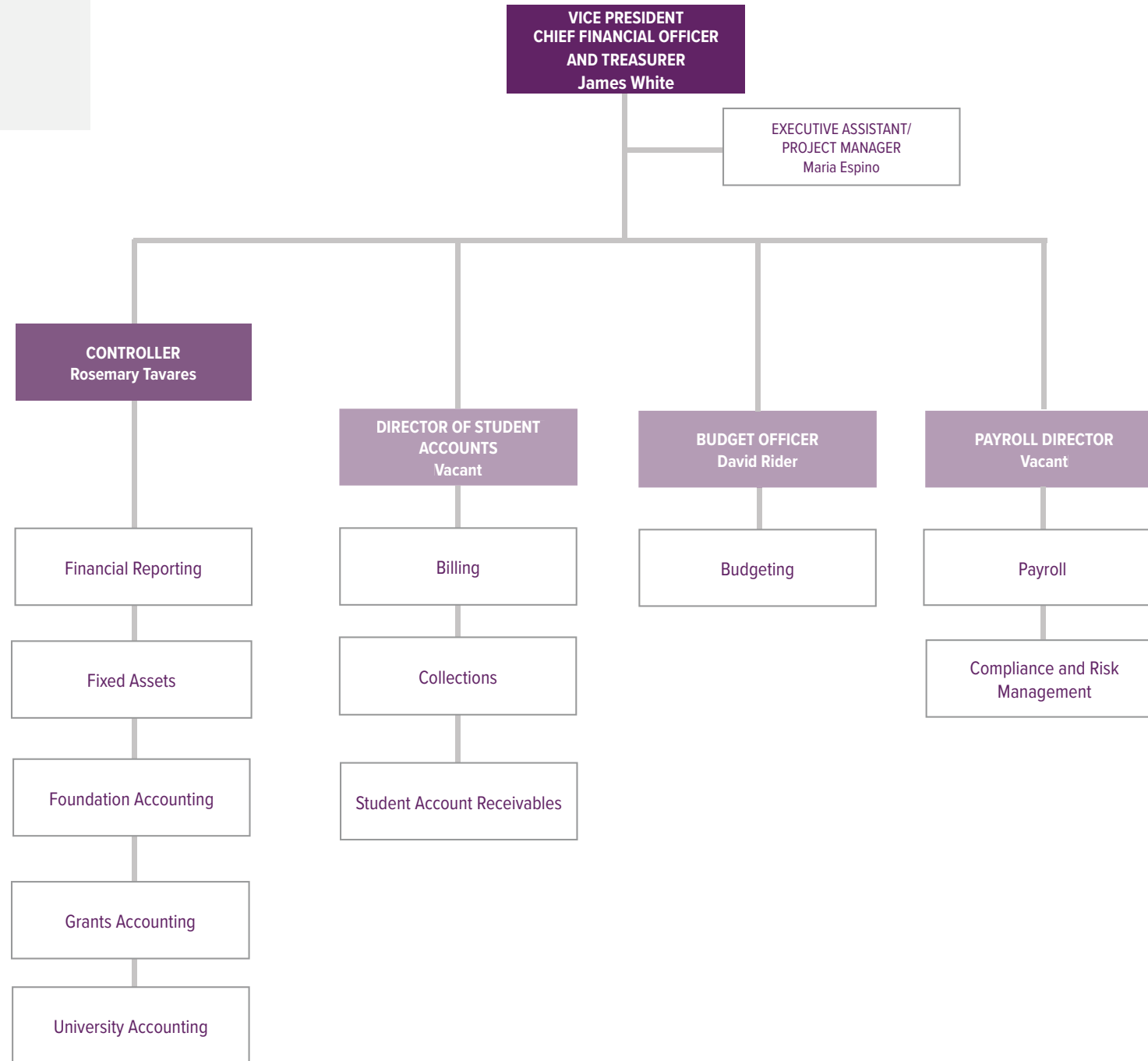


ENROLLMENT MANAGEMENT AND STUDENT SUCCESS



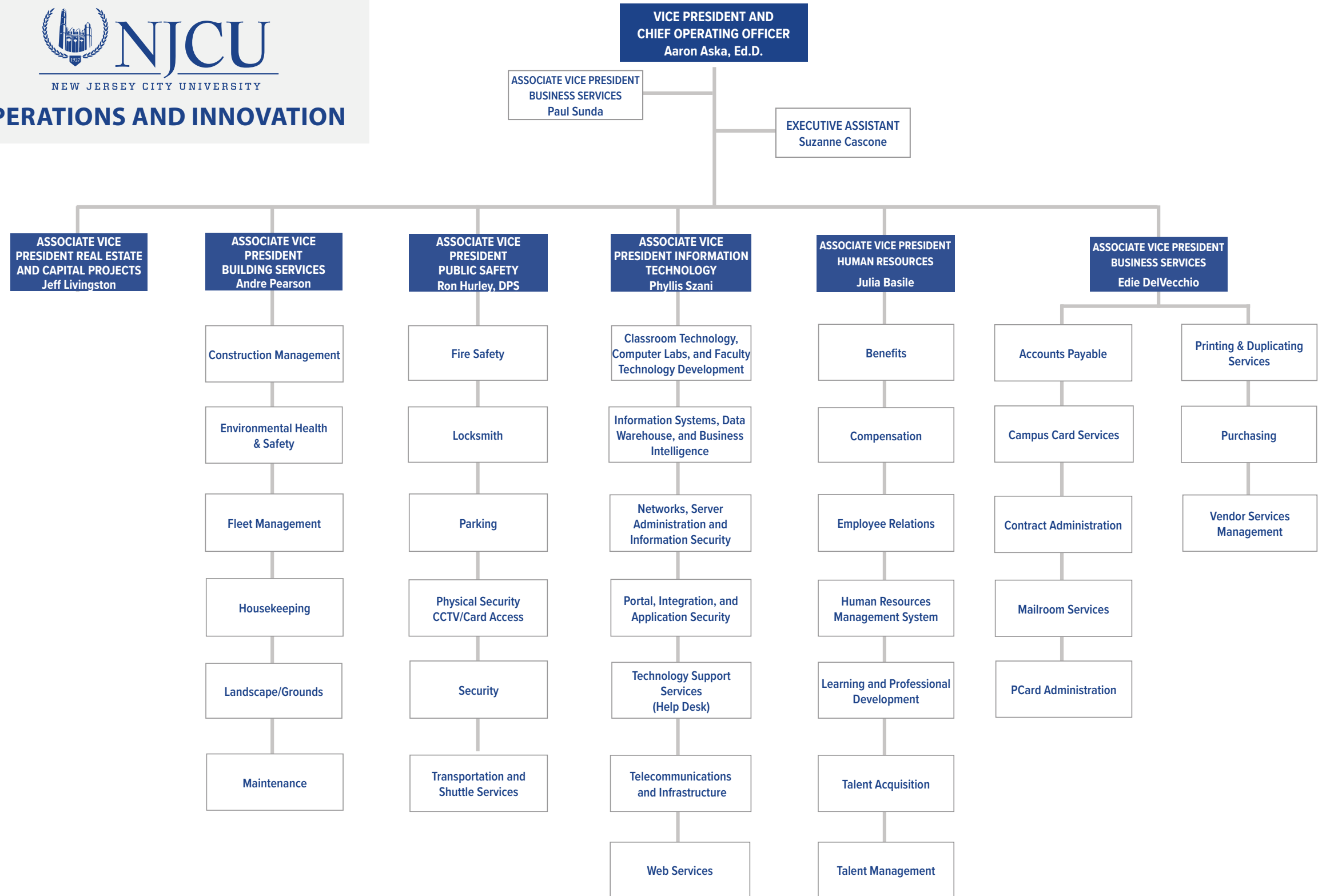


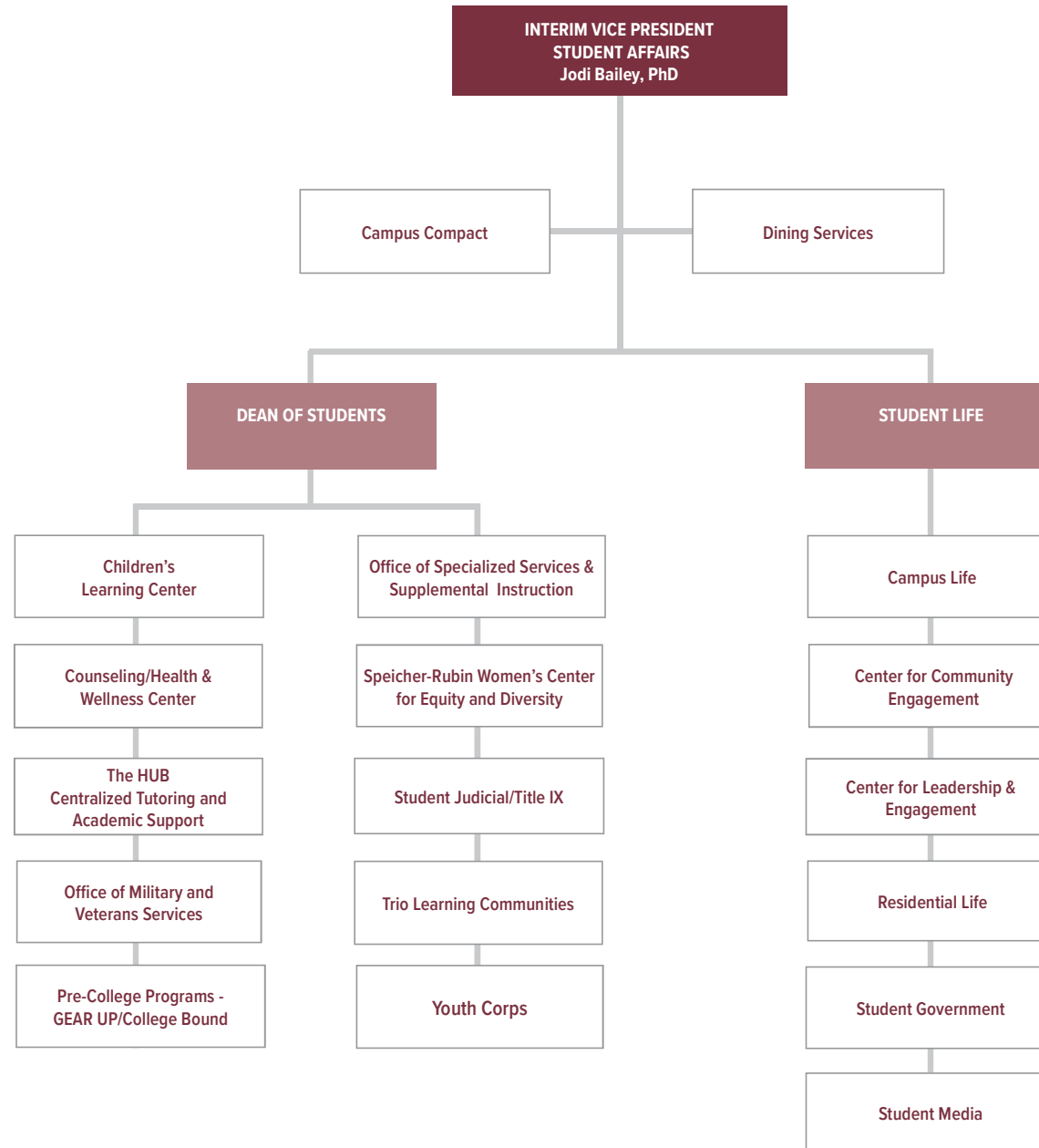
FINANCE & TREASURY





OPERATIONS AND INNOVATION







NEW JERSEY CITY UNIVERSITY

UNIVERSITY ADVANCEMENT & STRATEGIC INITIATIVES

VICE PRESIDENT AND CHIEF STRATEGY OFFICER
UNIVERSITY ADVANCEMENT & STRATEGIC INITIATIVES
Jason Kroll

PROJECT COORDINATOR
Rose Mary Reilly

