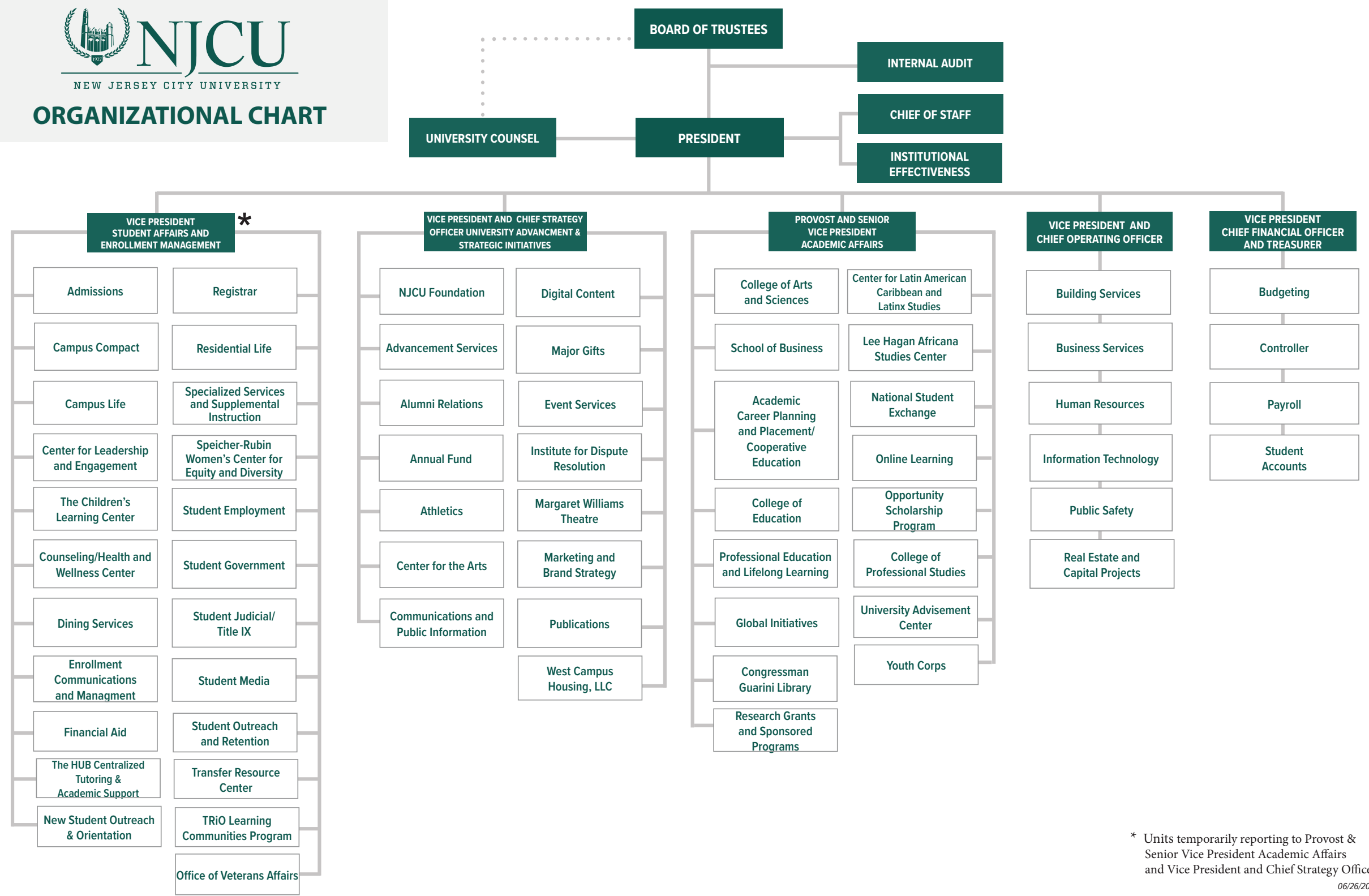




# ORGANIZATIONAL CHART

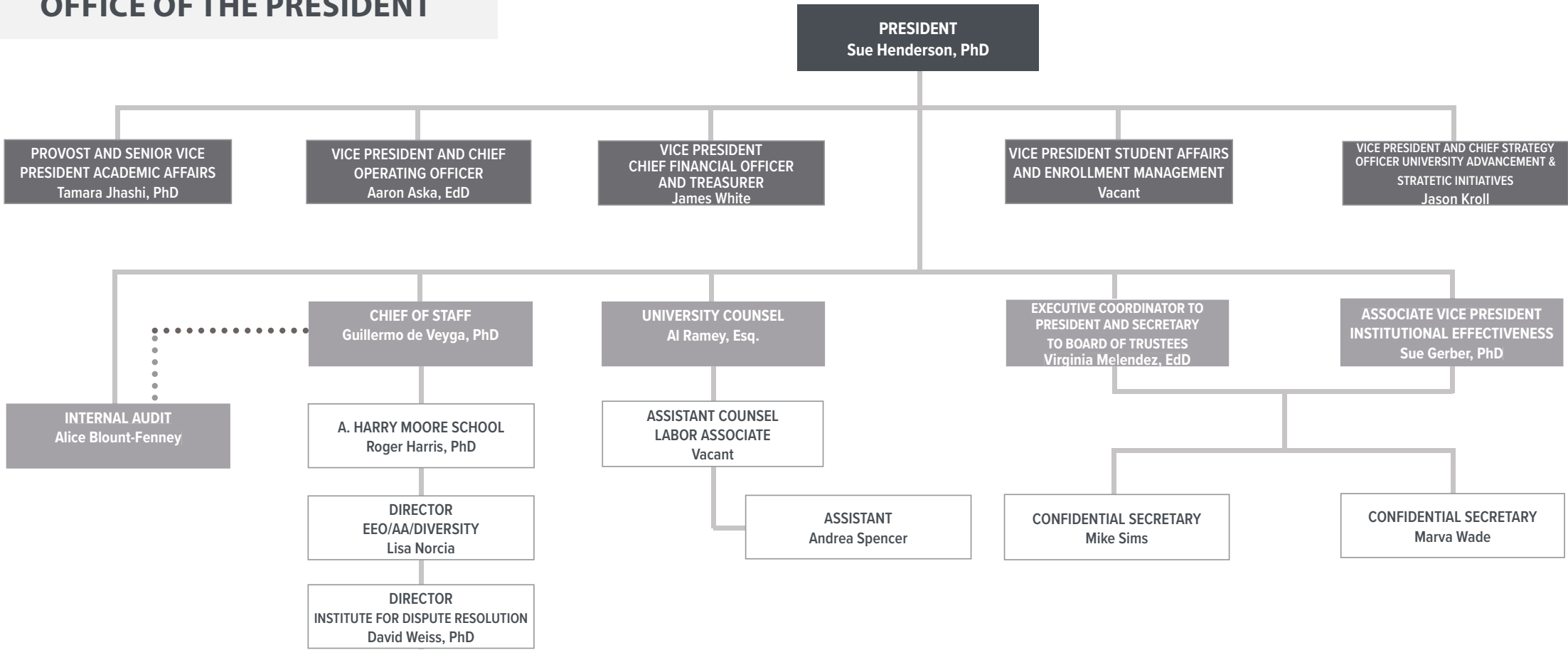


\* Units temporarily reporting to Provost & Senior Vice President Academic Affairs and Vice President and Chief Strategy Officer



NEW JERSEY CITY UNIVERSITY

# OFFICE OF THE PRESIDENT

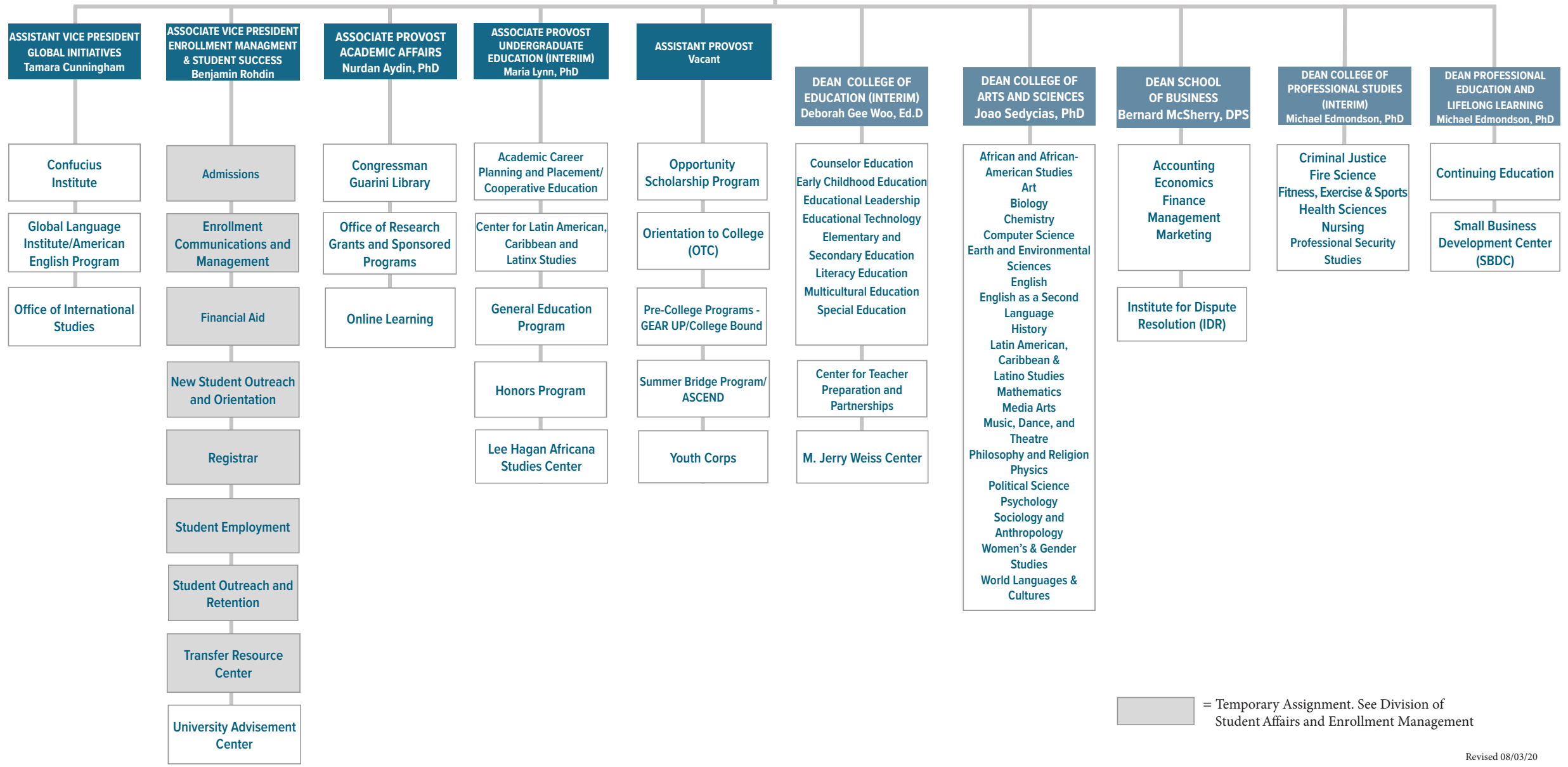


**PROVOST AND SENIOR VICE PRESIDENT ACADEMIC AFFAIRS**  
Tamara Jhashi, PhD

PROGRAM COORDINATOR  
Jennifer Fitzgerald

ADMINISTRATIVE ASSISTANT TO THE  
PROVOST AND SENIOR VICE PRESIDENT  
Vacant

ADMINISTRATIVE ASSISTANT  
Sherifa Abdallah



 = Temporary Assignment. See Division of Student Affairs and Enrollment Management



**VICE PRESIDENT AND CHIEF STRATEGY OFFICER**  
**UNIVERSITY ADVANCEMENT & STRATEGIC INITIATIVES**  
 Jason Kroll

**EXECUTIVE ASSISTANT**  
 Jennifer Brower

**PROJECT COORDINATOR**  
 Rose Mary Reilly

**DIRECTOR, NJCU CENTER FOR THE ARTS**  
 Stephanie Chaiken

Box Office Operations

Community Relations/  
Partnerships

External Programming

Grant Writing

Theater/PAC Management

Theater Rentals

**ASSOCIATE VICE PRESIDENT AND ATHLETICS DIRECTOR**  
 Shawn Tucker

Academic Support

Athletic Training

Aquatics

Community Recreation/  
Camps

Compliance

Facilities and Operations

Fitness and Intramurals

Marketing and Communications

Rising Knight Institute

Sports Programs

Student-Athlete Development

**CHIEF DEVELOPMENT OFFICER**  
 Kwi Brennan

Advancement Services

Advisory Boards

Alumni Relations

Annual Giving

Corporate and Foundation Relations

Major Gifts

NJCU Foundation

Planned Giving

Scholarship Administration

West Campus Housing, LLC

**DIRECTOR, EVENT SERVICES (INTERIM)**  
 Rose Mary Reilly

Venue Sales & Marketing

Venue Scheduling

Rental Policies & Procedures

**ASSOCIATE VICE PRESIDENT MARKETING AND COMMUNICATIONS (INTERIM)**  
 Faith Jackson

Communications and Public Relations

Creative Services

Digital Content

Marketing & Brand Strategy

**ASSOCIATE VICE PRESIDENT STUDENT AFFAIRS**  
 Jodi Bailey

Campus Compact

Dining Services

Office of Specialized Services & Supplemental Instruction

**DEAN OF STUDENTS**

**STUDENT LIFE**

Children's Learning Center

Center for Community Engagement

Counseling/Health & Wellness Center

Center for Leadership & Engagement

Office of Military and Veterans Services

The HUB Centralized Tutoring and Academic Support

Speicher-Rubin Women's Center for Equity and Diversity

Residential Life

Student Judicial/Title IX

Student Government

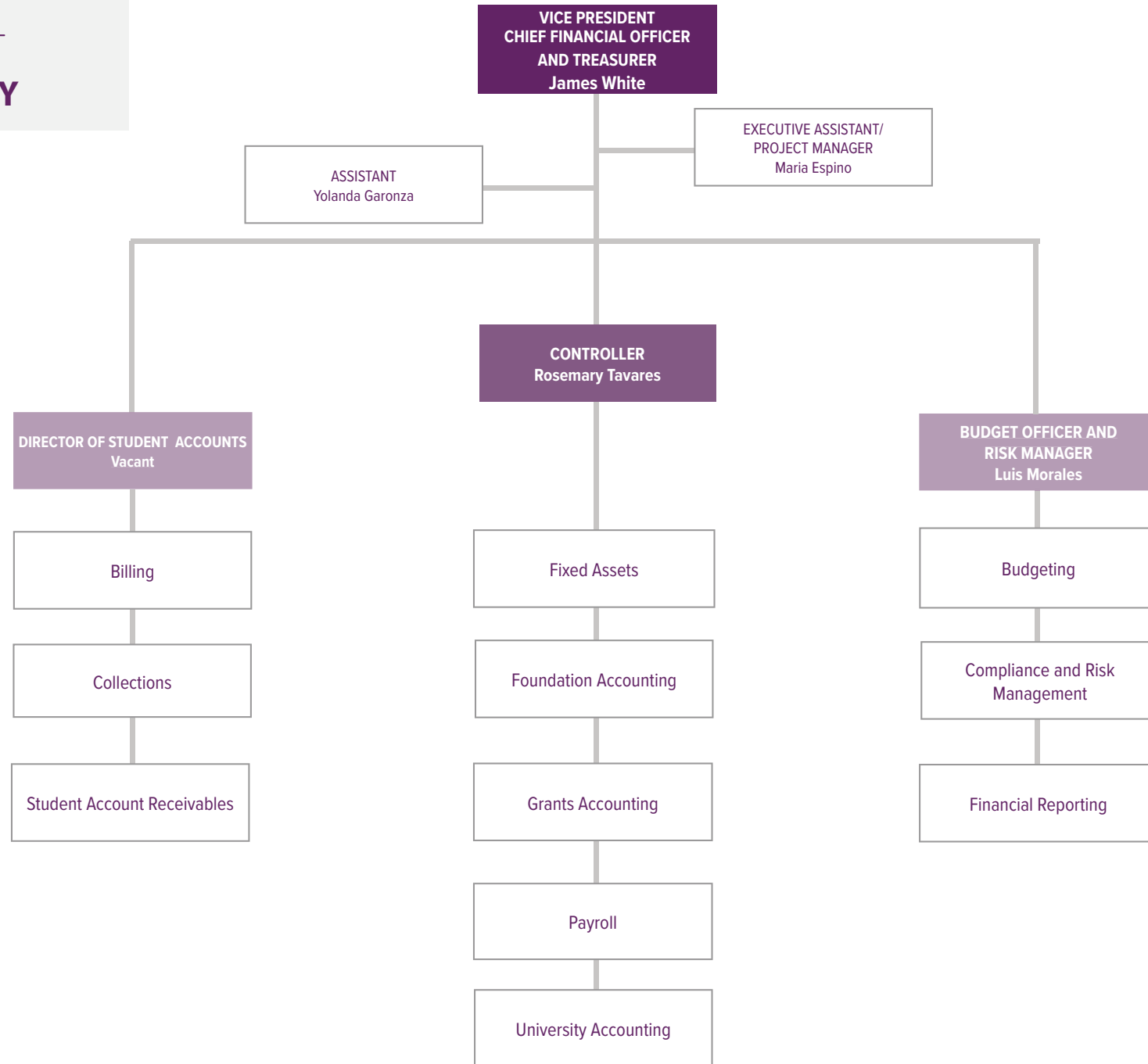
Trio Learning Communities

Student Media



NEW JERSEY CITY UNIVERSITY

# FINANCE & TREASURY





# OPERATIONS AND INNOVATION

**VICE PRESIDENT AND  
CHIEF OPERATING OFFICER**  
Aaron Aska, Ed.D.

ASSOCIATE VICE PRESIDENT  
BUSINESS SERVICES  
Paul Sunda

EXECUTIVE ASSISTANT  
Suzanne Cascone

**ASSOCIATE VICE  
PRESIDENT REAL ESTATE  
AND CAPITAL PROJECTS**  
Jeff Livingston

**ASSOCIATE VICE  
PRESIDENT  
BUILDING SERVICES**  
Andre Pearson

Construction Management

Environmental Health  
& Safety

Fleet Management

Housekeeping

Landscape/Grounds

Maintenance

**ASSOCIATE VICE  
PRESIDENT  
PUBLIC SAFETY**  
Ron Hurley, DPS

Fire Safety

Locksmith

Parking

Physical Security  
CCTV/Card Access

Security

Transportation and  
Shuttle Services

**ASSOCIATE VICE  
PRESIDENT INFORMATION  
TECHNOLOGY**  
Phyllis Szani

Classroom Technology,  
Computer Labs, and Faculty  
Technology Development

Information Systems, Data  
Warehouse, and Business  
Intelligence

Networks, Server  
Administration and  
Information Security

Portal, Integration, and  
Application Security

Technology Support  
Services  
(Help Desk)

Telecommunications  
and Infrastructure

Web Services

**ASSOCIATE VICE PRESIDENT  
HUMAN RESOURCES**  
Julia Basile

Benefits

Compensation

Employee Relations

Human Resources  
Management System

Learning and Professional  
Development

Talent Acquisition

Talent Management

**ASSOCIATE VICE PRESIDENT  
BUSINESS SERVICES**  
Edie DeVecchio

Accounts Payable

Campus Card Services

Contract Administration

Mailroom Services

PCard Administration

Printing & Duplicating  
Services

Purchasing

Vendor Services  
Management



NEW JERSEY CITY UNIVERSITY

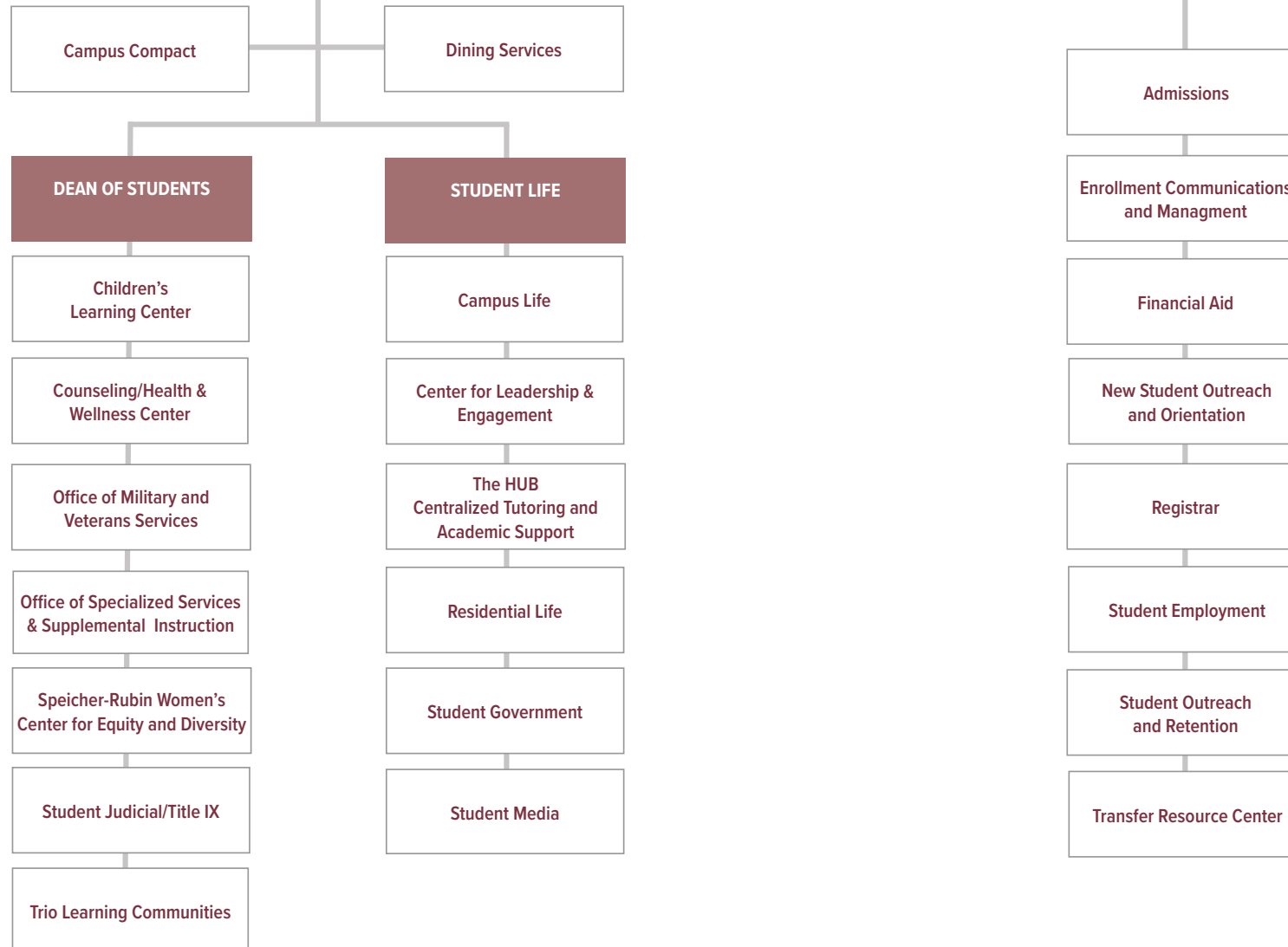
# STUDENT AFFAIRS AND ENROLLMENT MANAGEMENT

**VICE PRESIDENT STUDENT AFFAIRS AND ENROLLMENT MANAGEMENT**  
Vacant

CONFIDENTIAL ASSISTANT  
Vacant

**ASSOCIATE VICE PRESIDENT STUDENT AFFAIRS** \*  
Jodi Bailey

**ASSOCIATE VICE PRESIDENT ENROLLMENT MANAGEMENT & STUDENT SUCCESS** \*\*  
Ben Rohdin



\* Temporarily under Advancement  
\*\* Temporarily under Student Affairs