



**STUDENT RIGHT TO KNOW
CAMPUS SECURITY
&
FIRE SAFETY REPORT
2025**



**NEW JERSEY CITY UNIVERSITY
2039 KENNEDY BOULEVARD
JERSEY CITY, NJ 07305**

Table of Contents

Annual Security Report.....	4
Introduction.....	4
Mission.....	5
Department of Public Safety Facts.....	5
NJCU Department of Public Safety	5
Reporting a Crime.....	6
Contacting the Department of Public Safety.....	6
Caller I.D.....	6
Procedures for Disclosure	6
Timely Warnings	7
Emergency Response & Evacuation Procedures	7
Emergency Preparedness	7
Emergency Notification	7
Emergency Notification & Response.....	8
Crime Log	8
Notification to the Larger Community.....	8
Exercises and Drills	9
Campus Facilities.....	9
Housing Options	9
Residence Halls.....	9
Missing Student	10
New Jersey City University Missing Student Policy	11
Student Services and Responsibilities Policies	12
Student Code of Conduct.....	12
Sexual and Gender-Based Misconduct Policy Governing Students	12
Campus Sexual Assault Policy	13
Consent	13
Confidentiality	13
Campus Sexual Assault Victims' Bill of Rights	14
Campus Judicial and Legal Rights.....	15
Campus Intervention.....	15
Notice of Non-Discrimination and Title IX.....	15
Reporting Possible Title IX Violations	16
University Resources:	16
Off Campus Resources:	17

TITLE IX Compliance	18
Sex Offender Registry.....	18
Crime Prevention	19
Crime Prevention and Residential Safeguards	19
Weapons Violations Policy	19
Emergency Resource Numbers	22
Crime Definitions - Uniform Crime Reporting Handbook	23
Sex Offenses Definitions from the National Incident-Based Reporting System Edition of the Uniform Crime Reporting Program.....	24
VAWA Offenses	24
Definitions of Geography.....	25
Offense Definitions for Hate/Bias Related Crime Statistics as Per the UCR Hate Crime Reporting Guidelines.....	25
Campus Map	27
Crime Statistics	28
Hate Crimes	30
Hate Crimes Statistics	30
Annual Fire Safety Report on Student Housing.....	31
Introduction.....	31
Higher Education Opportunity Act	31
On-Campus Student Housing and Life Safety Systems.....	32
Fire Safety Policies for On-Campus Student Housing Facilities	33
Emergency Evacuation in Case of Fire.....	34
Training.....	35
Health and Safety Inspections	35
Fire Drill Procedure	36
Definitions.....	37
Additional Resources	38

Annual Security Report



Introduction

The *Jeanne Clery Disclosure of Campus Security Policy and Campus Crime Statistics Act*, codified at 20 USC 1092 (f) as a part of the Higher Education Act of 1965. It is a federal law that requires colleges and universities to disclose specific timely and annual information about campus crime and security policies.

The Clery Act, originally enacted by Congress and signed into law by President George Bush in 1990 as the **Crime Awareness and Campus Security Act of 1990**, was championed by Howard and Connie Clery after their daughter Jeanne was murdered at Lehigh University in 1986. They also founded the non-profit Security on Campus, Inc. in 1987. Amendments to the Act in 1998 renamed it in memory of Jeanne Clery.

The Campus Security Act requires Colleges and Universities to:

1. Publish an annual report every year by October 1st that contains three years of campus crime and certain security policy statements.
2. Disclose crime statistics for the campus, public areas immediately adjacent to or running through the campus and certain non-campus facilities and remote classrooms.
3. The statistics must be gathered from campus police or security, local law enforcement and other university officials who have “significant responsibility for student and campus activities.”

Each school must disclose crime statistics for the campus, unobstructed public areas immediately adjacent to or running through the campus, and certain non-campus facilities including off campus housing and remote classrooms. The statistics must be gathered from campus police or security, local law enforcement, and other school officials who have “significant responsibility for student and campus activities” such as student affairs. Professional mental health and religious counselors are exempt from reporting obligations but may refer patients to a confidential reporting system which the school may indicate to be either on or off-site.

Crimes are reported in the following 10 major categories, with several sub-categories: 1. Criminal Homicide broken down by (a) Murder and Non negligent Manslaughter (b) Negligent manslaughter; 2. Sex Offenses broken down by (a) Forcible Sex Offenses (includes rape) and (b) Non Forcible Sex Offenses, 3. Robbery, 4. Aggravated Assault, 5. Burglary, 6. Motor Vehicle Theft, 7. Arson, 8. Domestic Violence, 9. Dating Violence, 10. Stalking.

The second category of statistics that must be disclosed is Hate Crimes. A Hate Crime is a criminal offense that manifests evidence that the victim was intentionally selected because of the perpetrator’s bias against the victim. Hate Crimes broken down by (a) Race, (b) Sexual Orientation, (c) Gender, (d) Gender Identity, (e) Ethnicity, (f) Religion, (g) National Origin and (h) Disability.

Violence Against Women Act (**VAWA**) is the third category of crime statistics that must disclosed. These are Dating Violence, Domestic Violence, Sexual Assault and Stalking are considered crimes for the purposes of Clery Act reporting. Sexual Assault is included by the FBI as a Criminal Offense.

Schools are also required to report the following three types of incidents if they result in either an arrest or disciplinary referral: 1. Liquor Law Violations, 2. Drug Law Violations and 3. Illegal Weapons Possession. If both an arrest and referral are made only the arrest is counted.

The statistics are also broken down geographically into “on campus,” “residential facilities for students on campus,” non-campus buildings, or “on public property” such as streets and sidewalks. Schools can use a map to denote these areas. The report must also indicate if any of the reported incidents, or any other crimes involving bodily injury, is a “hate crime.”

Mission

Dedicated to maintaining a safe learning, living, and working environment for a diverse community, while employing the highest professional standards and providing exceptional customer service.

We will be committed to the following:

- Perform every job to the best of our ability with quality and integrity in mind.
- Demonstrate to our customers our abilities through our appearance, our conduct, our conversation, and our work.
- We will remember that customer satisfaction is our priority, not necessarily who is right and who is wrong.
- Providing quality services that ensure a safe and secure campus.
- Learning, changing, and improving.
- Focusing on results
- Working with integrity
- We will constantly strive to achieve excellence.



Department of Public Safety Facts

The Department of Public Safety is committed to enhancing the quality of life of the campus community and integrating the best practices of public and private policing with state-of-the-art security technology. The Department of Public Safety is comprised of the following committed personnel: Associate Vice President, Assistant Director, Office Manager, 1 Technology Administrator, 1 Shift Supervisor, 4 Senior Security Officers, 28 Public Safety Officers, and 1 Administrative Assistant. The Department of Public Safety has 5 components: Campus Safety, Crime Prevention, Parking and Transportation, Locksmith Services and Physical Security & Access Control.

NJCU Department of Public Safety

The Department of Public Safety maintains security patrols 24 hours a day, seven days a week on campus by foot and car. We are responsible for ensuring that the campus remains as safe as possible. The primary responsibility for crime prevention and personal safety rests with everyone. Each of us must take personal responsibility for our own safety, as well as for the safety of those around us. Let's get connected to share questions, concerns, or recommendations.



Njcu.edu/dps



Facebook.com/njcupds

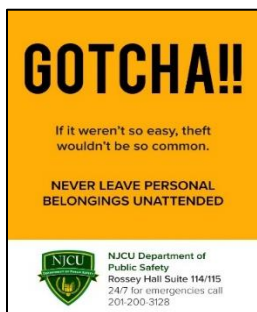


Twitter@njcupds



Instagram@njcupds

“Security is Everybody’s Business.”



Working together, we will continue to make New Jersey City University among the safest urban universities in the country.

Incidents known in common vernacular as Part I crimes that are identified to the Department of Public Safety are reported to the Jersey City Police Department to ensure that all agencies charged with providing services are aware of these incidents. The relationship and exchange of information with city, state and federal authorities is extremely important, and it is an ongoing process. The Jersey City Police Department alerts the Department of Public Safety of reported incidents in the surrounding neighborhoods that are jointly patrolled by both University Public Safety Officers and the Jersey City Police Department.

Reporting a Crime

To report a crime, emergency, or suspicious activity dial 3128 from any campus telephone or use the campus exterior emergency telephones on campus or dial (201) 200-3128 from both on / off-campus. You can also report a criminal incident in person at the Department of Public Safety, Rossey Hall 115, which is staffed with professional personnel 24 hours a day, seven days a week and by using the Rave Guardian APP.

If possible, please provide the following information when calling:

1. Your name and location.
2. The purpose of the call.
3. Request medical assistance, if required.
4. Be specific as possible:
 - Describe the activity taking place.
 - Describe the person(s) involved.
 - Location where the person(s) involved were last seen or their direction of travel.
 - Description of any motor vehicle involved.



The Department of Public Safety maintains a log for all reported criminal incidents, including those that occur on the streets adjacent to the campus community. The data is the basis for crime statistics reported to the FBI Uniform Crime Reporting System, for compliance with the Crime Awareness and Campus Security Act and the College and University Security Information Act for reporting crime statistics to the campus community.

Contacting the Department of Public Safety

The Department of Public Safety can be reached by **dialing 201-200-3128** or **3128** from the university phones.

Caller I.D.

The University has installed “Caller ID” on the lines terminating in the Public Safety Command Center. The use of this system will allow the Dispatcher to identify your calling location in the event of an emergency. These phones are connected to a “Caller ID” system, which permits The Department of Public Safety to identify your location should you be unable to speak.

Procedures for Disclosure

The Department of Public Safety serves as the “clearing house” in the statistical gathering of crime data from those with “significant responsibilities for students and campus activities” and reports such statistics involving pertinent criminal incidents and arrests or referrals gathered from various “campus security authorities” to the Public Safety office on a monthly and/or annual basis.

Likewise, the Jersey City Police Department reports pertinent statistics from the required geographical areas to New Jersey City University annually upon request. All figures reported are incorporated in the preceding statistical tables.

Timely Warnings

If a situation arises, either on or off campus, that constitutes a continuing threat, a campus wide “timely warning” will be issued by the AVP of the Department of Public Safety in conjunction with the Department of Public Information. The warning will be issued through the college’s e-mail system to students, faculty, and staff. Warnings will be issued using the university’s various communication systems. Depending on the circumstances of the crime, especially in all situations that could pose an immediate threat to the community and individuals, the Department of Public Safety may also post a notice through the Campus Emergency Notification System NJCU ALERT US providing the university community with more immediate notification. In such instances, a copy of the notice is posted in each residence hall and other campus buildings. Anyone with information warranting a timely warning should report the circumstances to the Department of Public Safety by phone (201) 200-3128 or in person at the dispatch center within Public Safety, Rossey Hall- room 115.

Emergency Response & Evacuation Procedures

New Jersey City University Department of Public Safety has established policies and procedures to ensure the safety and security of the campus community during and after an emergency response and evacuation. Through planning and collaboration between internal and external resources, NJCU Department of Public Safety manages emergency preparedness procedures for the campus community.

Emergency Preparedness

In the event of a dangerous situation or emergency involving an immediate threat against the campus community, the Department of Public Safety is responsible for responding to and confirming the significance of an emergency and/or dangerous situation. If it is confirmed that there is an emergency or dangerous situation that poses an immediate threat to the health and safety to members of the University community, the Department of Public Safety in collaboration with university officials will determine the contents of a message and will initiate the NJCU Emergency Notification System (ENS) to communicate the threat to the campus community.

ALICE

Alert
Lockdown
Inform
Counter
Evacuate

The Department of Public Safety has partnered with the ALICE (***Alert, Lockdown, Inform, Counter, Evacuate***) Training Institute. This course helps the University population prepare and proactively handle the threat of an aggressive intruder or active shooter event. ALICE training option-based tactics have become the accepted response, versus the traditional “lockdown only” approach. We encourage all Faculty and Staff members at New Jersey City University to complete the training course. Refer to your email to access the Alice training link.

Emergency Notification

In the event of an emergency, the NJCU ALERT US Emergency Notification System (ENS) enables the University to quickly notify members of the University community of critical information during an emergency. The NJCU Department of Public Safety will distribute information to the campus community utilizing one or more of the following Emergency Notification Systems.

Regroup Mass Notification – Regroup Mass Notification consists of a mass notification system that allows authorized University officials to send alerts and instructions to community members through telephone

landlines, cellular phones, text messaging and e-mails within moments of a critical incident. Members of the University community are automatically enrolled in Regroup Mass Notification using their personal information. However, if any information needs to be edited (if you want to update or add a telephone number for instance), they will [log in to NJCU ALERT US](#) and make the necessary edits.

NJCU ALERT US is designed to notify the Faculty, Staff and Student population with an instant emergency alert notification through desktop & digital signage, email, and Mobile App.

NJCU Website – When an alert is sent the University provides current and continuous updates through postings on the [NJCU website](#).

Public Address System – As an additional layer of communication, the University has installed a campus-wide emergency public address system. The PA system is managed by the Department of Public Safety and will be used during emergency and special situations only. The system integrates into the campus telephone system and offers both flexibility and unlimited future expansion.

Emergency Notification & Response

The NJCU Department of Public Safety is responsible for responding, investigating, documenting, and confirming the significance of the emergency or dangerous situation that may pose a threat to the safety and security of the campus community. In the event of a critical incident involving the University, members of the community are encouraged to notify the Department of Public Safety at (201) 200-3128 or dial 3128 from any campus phone. In all matters of concern, the Department of Public Safety gathers the necessary information, takes the necessary steps to mitigate the incident, and then notify the appropriate University officials.

If the situation warrants, the Department of Public Safety will notify external local law enforcement and emergency service units to assist in the response of a critical incident occurring within the campus facilities.

Those external agencies include but not limited to the following:

- Hudson County Office of Emergency Management
- Jersey City Office of Emergency Management
- Jersey City Police Department
- Jersey City Emergency Service Unit and Bomb Squad
- Jersey City Fire Department

Remember that preparedness is the key to survival. Please take a few minutes to review [this video](#) which will provide strategies and actions to be taken should you be involved in an active shooter attack.

Crime Log

The Department of Public Safety maintains the crime log for the most recent 60-day period open for the public to inspect during normal business hours, Monday through Friday, except holidays and closure of school. Any portion of the log beyond **60 days**, if not immediately available, will be made accessible within two business days of a request for public inspection.

Notification to the Larger Community

The NJCU Department of Public Safety works in conjunction with University Marketing and Communications Department and local law enforcement officials to coordinate any press releases or contact with the media regarding any critical incident that pose a threat not only to the immediate University community, but as well as the surrounding residential community.

Exercises and Drills

The NJCU Department of Public Safety conducts annual tabletop exercises and drills to test and assess its emergency response and evacuation procedures. These tabletop exercises are conducted with participating NJCU staff that provide their assessment and evaluation of the exercise. An after-action report is then developed to identify where improvements and revisions to the procedures are required.

The Campus Security Act requires Colleges and Universities to:

1. Publish an annual report every year by October 1st, that contains three years of campus crime and certain security policy statements.
2. Disclose crime statistics for the campus, public areas immediately adjacent to or running through the campus and certain non-campus facilities and remote classrooms.
3. The statistics must be gathered from campus police or security, local law enforcement and other university officials who have “significant responsibility for student and campus activities.”

Campus Facilities

The New Jersey City University administrative buildings are open from 8:30 a.m. – 4:30 p.m. Monday – Friday. Academic buildings generally are opened 7:00 a.m. – 11:00 p.m. Monday – Friday and 8:00 am-5:00 pm on Saturday. Buildings that are occupied beyond normal hours are required to adhere to the University’s “After Hours Policy.”

Many cultural and athletic events held on campus are open to the public. The campus bookstore and library are also open to the public. University facilities are well maintained with security concerns given a high priority. Landscaping and outdoor lighting on campus are designed for safety and security. Pathways are designed to provide well-traveled, lighted routes from parking areas to buildings and from building to building. Campus maps are available by contacting the Department of Public Safety.

Housing Options

Home for **327** students, The Housing & Residence Life Program at New Jersey City University offers more than one place to sleep. The University operates the West Campus Village residence hall. Select the hyperlinks for further information.

Please visit the [Housing at NJCU website](#).

All halls offer on-site laundry, study lounges, computer labs and on-line computer capabilities for each resident student. West Campus Village also has a workout facility, game room, and a conference room.

Following acceptance to the University, interested students may obtain information and an application form directly from the Office of Housing & Residence Life – Gilligan Student Union Building, Room 111, (201) 200-2338 or [apply online](#).

Residence Halls

The entrances of the residence halls are manned by the Department of Public Safety desk attendants during the day and by Public Safety Officers in the evenings to ensure the overall safety and security of the occupants. All exterior doors and ground floor windows are equipped with panic bars, audible alarms and break away locking

devices. It is the resident's responsibility to ensure that their visitors adhere to the Rules and Regulations of the Residence Life Policies.

During low occupancy periods, such as holidays and scheduled breaks, students are permitted to remain in the halls and coverage continues for that hall. During the summer months, West Campus Village is utilized as primary housing for external community events and athletic programs.

Authorization for use is pre-approved by the Housing & Residence Life Staff. All residence halls operate under the authority of Housing & Residence Life and assign staff to each residence hall when occupied. Resident students must use their Gothic Card to enter the building. All residence halls have card access and CCTV.

All persons entering the residence halls must either swipe their access card to gain entry or show a valid student photo I.D. card to staff upon entry into the building. All non-residents, including vendors, must surrender the I.D. card and sign the logbook.

Missing Student

Effective August 14, 2008, any institution participating in a Title IV federal student financial aid program that maintains on campus housing facilities must establish a missing student notification policy and related procedures.

The policy must:

- Inform each such student that such student has the option to identify an individual to be contacted by the institution not later than 24 hours after the time that the student is determined missing in accordance with official notification procedures established by the institution.
- Provide each such student a means to register confidential contact information if the student is determined to be missing for a period of more than 24 hours.
- Advise each such student who is under 18 years of age, and not an emancipated individual, that the institution is required to notify a custodial parent or guardian not later 24 hours after the time that the student is determined to be missing in accordance with such procedures.
- Inform each residing student that the institution will notify the appropriate law enforcement agency not later than 24 hours after the time that the student is determined missing in accordance with such procedures; and
- Require, if the campus security or law enforcement personnel has been notified and decides that a student who is the subject of a missing person report has been missing for more than 24 hours and has not returned to the campus, the institution to initiate the emergency contact procedures in accordance with the student's designation.

The procedures must:

- Include procedures for official notification of appropriate individuals at the institution that such student has been missing for more than 24 hours.
- Require any official missing person report relating to such student be referred immediately to the institution's police or campus security department.
- If, on investigation of the official report, such department determines that the missing student has been missing for more than 24 hours requires;

(I) such department to contact the individual identified by such student

(II) if such student is under 18 years of age, and not an emancipated individual, the institution to immediately contact the custodial parent or legal guardian of such student; and

(III) if subclauses (I) or (II) do not apply to a student determined to be a missing person, inform the appropriate law enforcement agency.

New Jersey City University Missing Student Policy – Office of the Dean of Students

It is the policy of New Jersey City University to investigate actively any report of a missing student who is enrolled at the University as either a full or part time student.

If a member of the University community has reason to believe that a student is missing, all possible efforts will be made to locate the student to determine his or her state of health and well-being through collaboration of the Public Safety Department, the Division of Student Affairs and the missing student's family and friends.

Procedures:

1. Create an incident report. Obtain as many details as possible from complainant.
2. Promptly dispatch Public Safety officer(s) to meet with the complainant to conduct a preliminary investigation.
3. Provide pertinent information to appropriate area law enforcement agencies.
4. Obtain student id number, student photograph, transcript, class schedule, roommate's name, and contact information (if appropriate) and pertinent records re: the student (i.e., judicial, academic, on campus work schedule, car registration, etc.).
5. Notify family members and advise them regarding available university support services.
6. Make notifications to university administration in accordance with established policies and procedures.
7. The AVP of Public Safety (or designee) will advise UCLT as necessary.

If not located within 24 hours, appropriate family members, associates or a university official will make an official missing person report to the law enforcement agency with jurisdiction. These procedures will be governed by federal, state, and local laws. University administrators will cooperate with, aid, and assist the primary investigative agency in all ways prescribed by law.

Suggested list of questions to answer as part of the investigation:

1. Is the student missing from the campus, his or her family residence, or another location?
2. Is there a witness to or physical evidence of an abduction or other foul play?
3. Is the student despondent or mentally or physically disabled?
4. Is the student experiencing academic, personal, or financial problems?
5. Has the student disappeared before?
6. Does the student have a known drug and/or alcohol problem?
7. Has the student received any threats or warnings?

Student Services and Responsibilities Policies

Student Code of Conduct

Preface:

The members of the New Jersey City University community recognize that the development of responsible student behavior and conduct is fostered by example, counseling, guidance, admonition, and adherence to university policies and regulations.

NJCU is committed to the overall educational and personal growth of its students. The University encourages the cooperation of all members of the campus community, both in and out of the classroom and through online communities. To that end, the University establishes this set of policies, standards of behavior, regulations, procedures, sanctions, and appeal processes. It is intended to prevent, limit, and correct actions that may impede, obstruct, or damage the educational environment, and threaten the maintenance of order.

It is expected that all students will make themselves familiar with this Code. Unfamiliarity with the Code is not grounds for failing to live up to the expectations set forth within the Code. While it is the goal of the disciplinary process to educate students as to the purpose and importance of abiding by the prescribed Code of conduct, the University may also issue sanctions as are appropriate and necessary to ensure continued and/or future adherence to this Code. This document and supporting materials were developed to guarantee procedural fairness to students when there has been an alleged failure to abide by NJCU's policies and regulations. Procedures may vary in formality given the gravity and nature of the offense and the sanctions that may be applied. Terms and prohibited conduct not explicitly defined here will be defined with reference to New Jersey Statutes.

Please review the [NJCU Code of Conduct](#).

Sexual and Gender-Based Misconduct Policy Governing Students

Policy:

New Jersey City University is a diverse, safe, and nondiscriminatory academic community whose existence depends on respect and civility, as well as a strict adherence to the standards of conduct set by its members. New Jersey City University expects that all members of the University community, students, faculty, administrators, or staff, conduct themselves such that they do not infringe upon the rights of others. Sex/Gender harassment, discrimination, and misconduct, including sexual violence, sexual gender-based misconduct, domestic violence, dating violence, and stalking are serious violations of these standards and will not be tolerated. New Jersey City University not only regards these actions to be violations of the standards of the Student Code of Conduct required of all persons associated with the institution (members of the University community, guests, and visitors), but also recognizes that these are violations of state and federal laws.

The University fully complies with all civil and/or criminal laws prohibiting harassment, discrimination, and sexual misconduct. Sexual misconduct is a violation of the New Jersey Law Against Discrimination, N.J.S.A. 10:5-1 et seq. The University is required to comply with Title IX of the Higher Education Amendments of 1972, which prohibits discrimination based on sex in education programs and activities; the Violence Against Women Reauthorization Act of 2013 (VAWA), which requires prompt, fair and impartial investigation, and resolution of allegations of sexual assault, stalking, dating violence and domestic violence; and Title VII of the Civil Rights Act of 1964 (as amended in 1991).

Please review the [Sexual and Gender-based Misconduct Policy Governing Students Policy](#).

Campus Sexual Assault Policy

New Jersey City University is an academic community whose existence depends on respect, trust, high regard for each student, and strict adherence to standards of conduct set by its members. Sexual assault, in any form, is a serious violation of these standards and will not be tolerated. The University encourages all members of the university community to be aware of both the consequences of sexual assault as governed by the provisions of the Code of Conduct, and the options available to victims. Victims are urged to seek assistance using any of the campus and community resources provided below or at the [Speicher Rubin Women's Center website](#).

All incidents will be taken seriously regardless of gender or sexual orientation.

Sexual assault is defined as sexual conduct without consent and includes:

- sexual contact – intentional touching, either of the victim or when the victim is forced to touch, directly or through clothing, another person's genitals, breasts, thighs, or buttocks.
- sexual penetration – vaginal intercourse, cunnilingus, fellatio, or anal intercourse whether by an acquaintance or a stranger without consent
- attempted rape
- sodomy – oral sex or anal intercourse; and
- sexual penetration with insertion of the hand, finger, or object into the anus or vagina either by the actor or upon the actor's instruction; the depth of insertion is not relevant.

Consent

Consent is a mutual and understandable exchange of affirmative words or actions which indicate permission to engage in mutually agreed upon sexual activity. Consent must be informed, voluntary, and actively given. Consent is free of force – including physical violence, threats, intimidation, and coercion. It is the responsibility of the initiator to obtain clear and affirmative responses at each stage of sexual engagement. The absence of a negative response is not consent. An individual who is incapacitated by alcohol and/or other drugs both voluntarily or involuntarily consumed may not give consent. Past sexual activity does not imply ongoing future consent.

An individual is incapacitated when s/he cannot make rational or reasonable decisions. She / he lacks an understanding of the, *who, what, when, where why* and *how* of their sexual actions. A person is also unable to give consent if they are physically helpless, asleep, or mentally incompetent.

“Acquaintance rape” and “date rape” are terms used to describe a rape in which the victim knows the rapist. They may have dated previously, had a class together, met at a party or be relatives or friends. Regardless of any prior relationship that may have existed, if one person forces another to submit to sexual contact, the act is still a form of sexual assault and a violation of the Code of Conduct.

Confidentiality

Anyone wishing to report a rape or sexual assault of any kind (including a past rape or abuse) can be assured that confidentiality will be maintained to the extent possible. Reporting a rape or assault does not mean formal disciplinary or court action has been initiated.

A permanent record of the receipt of the complaint will remain in the Department of Public Safety, with an indication of the disposition of the complaint, and shall remain confidential, subject to court subpoena. The record of any complaint that is upheld shall be made part of the personnel file of the accused for employees or the Dean of Students' disciplinary records for students.

All formal hearing proceedings and all evidence introduced in connection therewith shall be on the record and must be confidential, subject to court subpoena, pending the outcome of any disciplinary proceedings against the respondent.

If you are the victim of sexual violence:

1. **Immediate Danger:** Dial 9-1-1 for emergencies from a campus phone or a non-campus phone to report.

2. **Medical Help:** Public Safety will assist in contacting EMS for transport to Jersey City Medical Center's Trauma Recovery Center, which offers comprehensive care, including crisis intervention, counseling, and support services specifically for survivors of sexual assault.
 - Address: 355 Grand St, Jersey City, NJ 07302
 - Phone: (201) 915-2000

Survivors of sexual violence have the right to immediate medical evaluation and evidence collection. Evidence collection does not commit the survivor to filing a criminal complaint and can be held for 90 days. It is advisable not to bathe, shower, douche, or change clothes. In New Jersey, emergency room fees related to a sexual assault are waived if the survivor files a police report. If the survivor does not file a report, the fees are likely to be covered by the Crime Victims Compensation Fund.

3. **The Hudson County Rape Crisis Center** offers support and can be reached at their 24-hour hotline: 1-800-322-8092.
4. **Student Health Services at NJCU** seek assistance using any of the campus and community resources provided below or at the [Speicher Rubin Women's Center website](#).
5. **File a Title IX Complaint.** This federal law protects all NJCU students, faculty and staff by prohibiting sex-based misconduct, including sexual discrimination and harassment, and sexual offenses. Contact NJCU's Title IX Coordinator Dr. Pia Stevens Haynes, Ed.D at 201-200-3507.

If you know a survivor of sex-based misconduct, refer them to this document, encourage them to seek medical care, and speak with a trained counselor or sexual assault advocate. Clearly express your support for them. Above all, prioritize and protect their privacy. Be sensitive to their experience as they navigate the healing process.

Written information regarding prevention, response, and support services are available in person in the offices of the Dean of Students, Residence Life, Counseling Services, and Public Safety, and online at:

[Sexual Assault and Abuse | New Jersey City University](#)

[Crisis Resources | New Jersey City University](#)

[Notice of Non-discrimination and Title IX | New Jersey City University](#)

Campus Sexual Assault Victims' Bill of Rights

New Jersey City University follows the Campus Sexual Assault Victims' Bill of Rights, enacted by the State of New Jersey. Copies of the New Jersey Campus Sexual Assault Bill of Rights are available in the Office of the Dean of Students and Residence Life.

The New Jersey Campus Sexual Assault Victims' Bill of Rights ensures that students who are survivors of sexual assault have specific rights and protections. Here are some key points typically included in the bill:

1. **Confidentiality:** Survivors have the right to confidentiality regarding their situation and the details of their assault.
2. **Support Services:** Institutions must provide access to confidential support services, including counseling and advocacy.
3. **Medical Attention:** Survivors have the right to seek medical attention and receive information about medical services available to them.
4. **Reporting Options:** Survivors can report the incident to campus authorities and law enforcement, and they have the right to choose how they wish to proceed with their case.
5. **Protection Against Retaliation:** Students are protected against retaliation for reporting an assault or participating in an investigation.

6. **Educational Accommodations:** Survivors may request changes to their academic or living situations to ensure their safety and comfort.
7. **Clear Procedures:** Institutions must provide clear procedures for reporting and responding to sexual assault complaints.
8. **Timely Notification:** Survivors have the right to be informed about the outcomes of their case.

The New Jersey Campus Sexual Assault Victims' Bill of Rights applies to survivors who are NJCU students. It applies to sexual assaults that occur off campus as well. The bill ensures that students, regardless of where the assault takes place—on or off campus—are afforded the same rights and protections. This includes access to support services, confidentiality, and options for reporting the incident. Institutions are required to support survivors in navigating their options, regardless of the location of the assault.

Campus Judicial and Legal Rights

The survivor has the right to have any allegations of sexual assault investigated and adjudicated by the appropriate criminal and civil authorities of the jurisdiction in which the sexual assault is reported; the right to receive full and prompt cooperation and assistance of campus personnel in notifying the proper authorities; and the right to receive full, prompt and trauma center cooperation of campus personnel with regard to obtaining, securing and maintaining evidence, including a medical examination when it is necessary to preserve evidence of the assault.

The procedures for investigation and adjudication are set forth in the [New Jersey City University Interim Policy on Sex-based Misconduct](#).

Both the complainant (the accuser) and the respondent (being accused) have the right to bring an advisor of their choice and to be notified of the outcome of any institutional disciplinary proceeding brought alleging a sex offense. Preponderance of the evidence is the standard of proof used in these proceedings.

The ranges of disciplinary sanctions for a student found responsible for a violation of the sex offenses are set forth in the Title IX Policy and can include expulsion for more severe cases.

Campus Intervention

New Jersey City University is committed to supporting students in matters related to criminal incidents or allegations of sexual assault. The university will take reasonable and necessary steps to prevent further unwanted contact between survivors and their alleged assailants. Upon request, survivors will receive assistance in adjusting their academic and living arrangements, when such changes are feasible.

Additionally, survivors can apply for a Domestic Violence Order or Protection Order through the Family Division Office of the Superior Court in the county where they live, where the incident occurred, or where the alleged assailant resides. After hours, applications can be made through the police department, who will contact a judge to determine whether to issue a Temporary Restraining Order (TRO). At the courthouse, staff members are available to assist with the application process. A hearing officer or judge will then review the application and decide whether to grant the TRO, and the other party will not be present during this hearing.

Notice of Non-Discrimination and Title IX

New Jersey City University (NJCU) is a higher education place of work, teaching, and learning for the benefit of students and the overall campus community. NJCU is committed to providing a campus environment free from discrimination based on sex. Compliance with Title IX of the Education Amendments of 1972, 20 U.S.C. Section 1681 et seq. ("Title IX") is an important part of this commitment.

Title IX is a federal civil rights law and provides that: *“No person in the United States shall, on the basis of sex, be excluded from participation in, be denied the benefits of, or be subjected to discrimination under any education program or activity receiving Federal financial assistance.”*

Under Title IX, discrimination based on sex includes sexual harassment or sexual violence, such as rape, sexual assault, sexual battery, or sexual coercion.

Reporting Possible Title IX Violations

The university has a responsibility to respond promptly and effectively to address sexual harassment or sexual violence complaints under Title IX. In order to address questions related to Title IX compliance or to facilitate the reporting of violations under Title IX, the following persons have been designated Deputy Title IX Coordinators to whom such inquiries or complaints should be made.

Title IX Coordinators

Dr. Pia Stevens Haynes, Ed.D.

Acting VP of Student Development and Community Engagement/Dean of Students

Student Affairs Division

Title IX Coordinator

2039 Kennedy Boulevard

Hepburn Hall, Room 303

Jersey City, New Jersey 07305

pstevenshaynes@njcu.edu

Telephone: 201-200-3507

In addition to making an inquiry or complaint to the Deputy Title IX Coordinator, persons who believe they have been subjected to conduct in violation of Title IX should take note of the availability of the following resources for reporting or support and are encouraged to avail themselves of any that they determine to be appropriate for their individual circumstances.

University Resources:

The Office of the Dean of Students – 201-200-3525; Gilligan Student Union (GSUB), Room 111

Division of Student Affairs and Enrollment Management – 201-200-3507; Hepburn Hall, Room 303

***The Health and Wellness Center** – 201-200-3546; Vodra Hall, Suite 107

***The Counseling Center** – 201-200-3165; Gilligan Student Union (GSUB), Room 308

***Speicher-Rubin Women's Center for Equity / Diversity** – 201-200-3189; Gilligan Student Union, Room 318

Office of Equal Employment Opportunity/Affirmative Action–201-200-3075; Hepburn Hall, Room 305 - report or discuss incidents of sexual assault, sexual harassment, domestic and dating violence and stalking.

Department of Public Safety – 201-200-3128; Rossey Hall Room 115 – Open 24 hours a day, 7 days a week.

***Confidential Resources** - If students need to speak with a confidential resource, students may contact the Counseling Center, the Health and Wellness Center, or the Speicher-Rubin Women's Center for Equity and Diversity (contact information listed above).

Off Campus Resources:

National Sexual Assault Hotline 1-800-656-COPE (2673)

Hudson SPEAKS Against Sexual Violence (Designated rape crisis center for Hudson County)

Assists survivors of sexual assault in Hudson County; provides free and confidential services to survivors of sexual assault; 24-hour crisis hotline; 24-hour escorts to hospitals, courts, and law enforcement agencies; and individual and group counseling for survivors and their significant others. Located at Christ Hospital, 179 Palisade Ave., Jersey City; 24-hour hotline, 201-795-5757

The Jersey City Police Department; 911 Emergency

The Jersey City Police Department refers all sexual assaults to the Hudson County Special Victims Units, who will receive reports of incidents, investigates, and make decisions regarding arrest and prosecution.

Hudson County Prosecutor's Office, Special Victims Unit

555 Duncan Avenue -2nd floor, Jersey City, NJ 07306

201-915-1234

Available 24hrs including weekends and holidays.

www.hcspo.org

Jersey City Medical Center

355 Grand Street, Jersey City, NJ 07302

201-915-2000

<https://www.rwjbh.org/jersey-city-medical-center/>

Women's Rising

270 Fairmount Avenue

Jersey City, NJ 07306

Domestic Violence Services 24/7 Helpline 201-333-5700

info@womenrising.org

www.womenrising.com

loveisrespect

Provides information about how you can recognize an unhealthy or abusive relationship. Offers free and confidential phone, live chat and texting services are available 24/7/365.

Hotline 1-866-331-9474 | TTY: 1-800-787-3224

Text: LOVEIS to 1-866-331-9474

visit loveisrespect.org to chat online.

www.loveisrespect.org

New Jersey Coalition against Sexual Assault (NJCASA)

24-hour hotline 1-800-601-7200

www.njcasa.org

Rape, Abuse, and Incest National Network (RAINN)

A free, confidential, national sexual assault 24-hour hotline 1-800-656-HOPE (4673)

Also offers online chatting with a trained RAINN support specialist, anytime.

www.rainn.org

Manavi

An organization that supports survivors of violence with a specific focus on the rights and needs of South Asian women. 24-hour hotline: 1-732-435-1414

State of New Jersey, Department of Children and Families, Services for Women

Provides services and advocacy for women, including a statewide Domestic Violence Hotline that provides a 24-hour, seven-day-a-week confidential hotline for domestic violence victims and others seeking crisis intervention, information and/or referral services 1-800-572-SAFE (7233).

TITLE IX Compliance

As an academic community, we share responsibility to foster and maintain a safe campus community free from discrimination on the basis of sex.

Regarding reports of incidents of sexual violence and other conduct in violation of Title IX, all employees (apart from the Counseling Center, Health & Wellness Center, and the Speicher-Rubin Women's Center) are required to report any such incidents which come to their attention to the Title IX Coordinator, Dr. Pia Stevens Haynes, Ed.D. at pstevenshaynes@njcu.edu, 201-200-3507.

For complaints involving students or the filing of complaints by students and to obtain further resources and information, please visit the Office of the [Dean of Students Title IX resources page](#).

[NJCU Title IX Complaint Form](#)

Complaints involving Title IX violations may be filed directly with the U.S. Department of Education or the Office of Civil Rights as noted in [Notice of Non-discrimination and Title IX | New Jersey City University](#).

Sex Offender Registry

New Jersey law authorizes the Division of State Police to make available to the public over the internet information about certain sex offenders required to register under Megan's Law. The sex offender registry law can be found in the New Jersey State Code Title 2c:7-12 to 19.

This information is being made available on the internet to facilitate public access to information about persons who have committed a sex offense, to enable you to take appropriate precautions to protect yourself and those in your care from possible harm.

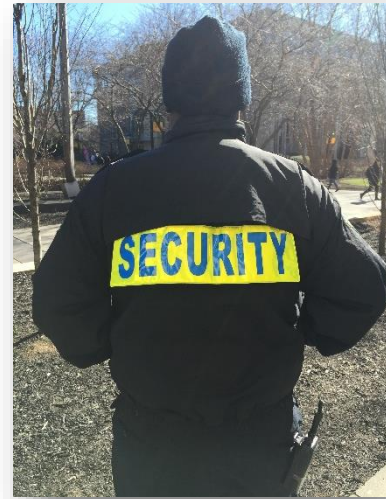
Public access to registry information is intended solely for the protection of the public, and should never be used to threaten, intimidate, or harass another. To review the New Jersey Sex Offender Internet Registry disclaimer, visit the [New Jersey State Police website](#).

Crime Prevention

Crime Prevention and Residential Safeguards

It is well recognized that the prevention of crime provides the best measure of protection. Therefore, The Department of Public Safety operates a proactive crime prevention unit that works closely with the members of the University Community to provide a safe place to work, live and learn.

The Department of Public Safety provides and/or collaborates on presentations to include topics such as personal safety, vehicle and residential security, office and equipment security and sexual assault prevention. Brochures and literature on crime prevention and personal safety are available through the department's investigations/crime prevention office.



Weapons Violations Policy

This policy is intended to help provide for the safety and security of the New Jersey City University community.

Stakeholders Affected:

This Policy applies to all students, faculty, and staff of New Jersey City University; associates of the University and affiliated entities; and their respective contractors and guests. It always applies in and on all building and grounds occupied or controlled by New Jersey City University or affiliated entities; at all events and activities sponsored or participated in by the University or affiliated entities, regardless of their location; and to any off-campus conduct of the aforementioned individuals, whether or not they are engaged in University business at the time, to the extent that such conduct is in violation of any federal, state, or local laws. The Policy is not applicable to online students unless such a student possesses or uses a weapon (1) while [s]he is physically present on a New Jersey City University campus or at an event or activity sponsored by the University, or (2) in violation of federal, state, or local law.

Definition:

Policy Text:

Except as set forth in this Policy under "Limited Exceptions", the following actions are prohibited:

- Possession, knowledge of possession, or failure to report the use of a firearm, dangerous weapon, or realistic model of a weapon.
- Storage or use of a firearm, dangerous weapon, or realistic model of a weapon, by any person or under any circumstances covered by this Policy, whether or not in violation of the law and including (but not limited to) the use of an implement of any kind as a weapon, is strictly forbidden.
- Unauthorized use of any weapon or realistic model of a weapon as defined in the New Jersey Code of Criminal Justice.

Limited Exceptions

Upon written request, the President of the University and/or a designee delegated authority (the "Authorizing Official"), shall be authorized to grant permission for a current federal, state or local law enforcement officer or other person required by law to carry a weapon; or member of the armed forces; to carry firearms or other weapons on campus or at University-sponsored events and activities, only to the extent required by law or official rules of conduct applicable to such person and where, in the sole discretion of the University, the

granting of such request would neither pose an undue danger to the New Jersey City University community nor subject the University to unacceptable legal or financial risk.

Procedures Applicable to Exceptions

1. A request for permission under this Policy must be made in writing to the Authorizing Official prior to the requesting individual entering a New Jersey City University campus in possession of a weapon. Such a request, which shall be complete, current, and accurate in all respects, shall succinctly state the grounds upon which permission is requested. At a minimum, the grounds shall include statements that the requesting individual.
 - a. is a current federal, state, or local law enforcement officer or other person who is required by law to carry a weapon; member of the armed forces; campus public safety officer; or person required to carry a weapon by law or official rules of conduct applicable to such person; and
 - b. agrees to abide by all policies, procedures, and instructions of New Jersey City University with respect to the possession or use of weapons. In addition, the statement shall identify the specific weapon(s) to be carried.

The requesting individual may not carry firearms or other weapons on campus or at university-sponsored events and activities unless and until the University has granted written permission to do so.

2. The Authorizing Official, after verifying that the request includes the required information and gathering any additional information [s]he may deem appropriate, shall determine whether (and if so, to what extent) to grant the request. The determination shall be communicated in writing and shall be considered final; however, the denial of a request made under this Policy shall not bar a subsequent request by the same person.
3. Permission granted under this Policy shall be conditioned upon the person to whom such permission is being granted submitting a written Acknowledgement & Agreement (substantially in the form attached to this policy, subject to authorized revisions) stating that such person has read and understands this Policy; understands that the weapon is not to be visible or used, except to the extent required by applicable laws, regulations or rules of conduct; agrees to
 - a. follow all applicable laws.
 - b. take all appropriate precautions to secure the weapon, avoid injury or disruption to members of the New Jersey City University community, affiliated entities or unaffiliated third parties; and
 - c. unconditionally agrees to indemnify and hold harmless New Jersey City University, its affiliates, and their respective trustees, directors, officers, employees, agents and representatives against any losses, liabilities and related expenses (including, but not limited to, reasonable attorney's fees) they may incur in connection with such person's possession or use of a weapon, whether or not such possession or use is determined to be negligent or in violation of this Policy or any applicable law, regulation or rule of conduct.
4. A person receiving such authorization, which shall only apply to the specific weapon(s) identified in the granted request, shall promptly notify the Authorizing Official in writing of
 - a. any loss or theft of the weapon; or
 - b. any material change in the facts or circumstances upon which permission was granted.
5. Upon granting or revoking permission under this Policy, the Authorizing Official shall immediately furnish written notice to the President of the University; the Vice President of Student Affairs; the Vice President of Operations; and the Associate Vice President of Public Safety.
 - a. If permission is granted to a qualified student or faculty member under this Policy, in addition to notifying the individuals identified above, the Authorizing Official also shall immediately furnish prompt written notice to the University Provost. Upon receiving such notice with respect

to a student, the University Provost shall promptly take appropriate steps to notify members of the faculty for each course in which the student is registered.

- b. If permission is granted to a qualified associate or contractor under this Policy, in addition to notifying the individuals identified above the Authorizing Official also shall immediately furnish written notice to the Associate Vice President of Public Safety, who shall take appropriate steps to notify the head of the department of which the associate is a member or that is directly responsible for coordinating the contractor's activities.
6. Except as otherwise set forth in writing by the Authorizing Official, permission granted under this Policy shall be effective only for the academic term in which it is granted unless renewed in writing; may be revoked at any time, in writing; and shall terminate automatically when the person to whom permission has been granted leaves the University or is suspended for any reason. The granting of permission applicable to a stated term does not guarantee that this Policy shall not be revised or that permission will remain in effect for the remainder of that term or for any subsequent terms.

Violations

Any person who violates any provision of this Policy, including (but not limited to) a person to whom this Policy applies who possesses or uses a weapon in violation of any federal, state, or local laws during off-campus activities unrelated to the University, shall be subject to disciplinary measures, up to and including suspension or termination. In the discretion of the Authorizing Official and in the interests of public safety, a person accused of violating this Policy may be suspended immediately pending the completion of formal disciplinary procedures.

Any student who violates any provision of this Policy will also be in violation of, and subject to the sanctions of, the Student Code of Conduct.

In addition, violations may be reported to law enforcement agencies.

Emergency Resource Numbers



NJCU Switchboard	(201) 200-2000
Department of Public Safety	(201) 200-3128/3127
Health & Wellness Center	(201) 200-3456
Jersey City Police Department	(201) 547-5477
Jersey City Fire Department	(201) 547-4240
NJCU Counseling Center	(201) 200-3165
Liberty Health Systems, Inc. Formerly Jersey City Medical Center	(201) 915-2000
Bayonne Medical Center	(201) 858-5000
Christ Hospital	(201) 795-8200
Towing Service	(201) 656-3321
Lock Out Service	(201) 348-8613
Taxi Cabs	(201) 451-1332, (201) 209-9300, (201) 985-1888

Crime Definitions - Uniform Crime Reporting Handbook

Arson

Any willful or malicious burning or attempt to burn, with or without intent to defraud, a dwelling house, public building, motor vehicle or aircraft, personal property of another, etc.

Manslaughter by Negligence

The killing of another person through gross negligence.

Murder and Non negligent Manslaughter

The willful (non-negligent) killing of one human being by another.

Robbery

The taking or attempting to take anything of value from the care, custody, or control of a person or persons by force or threat of force or violence and/or by putting the reporter in fear.

Aggravated Assault

An unlawful attack by one person upon another for the purpose of inflicting severe or aggravated bodily injury. This type of assault usually is accompanied by the use of a weapon or by means likely to produce death or great bodily harm. (It is not necessary that injury result from an aggravated assault when a gun, knife, or other weapon is used which could and probably would result in serious personal injury if the crime were successfully completed).

Burglary

The unlawful entry of a structure to commit a felony or a theft. For reporting purposes this definition includes unlawful entry with intent to commit a larceny or felony; breaking and entering with intent to commit a larceny; housebreaking; safecracking; and all attempts to commit any of the aforementioned.

Motor Vehicle Theft

The theft or attempted theft of a motor vehicle. (Classify as motor vehicle theft all cases where automobiles are taken by a person not having lawful access even though the vehicles are later abandoned including joyriding).

Weapon Law Violations

The violation of laws or ordinances regulatory in nature, such as: manufacture, sale, transportation, concealment, or possession of firearms, cutting instruments, explosives, incendiary devices, or deadly weapons; carrying deadly weapons, concealed or openly.

Drug Abuse Violations

The violation of state and local laws prohibiting the production, distribution and /or use of certain controlled substances and equipment or devices utilized in their preparation and /or use. The unlawful cultivation, manufacture, distribution, sale, purchase, use, possession, transportation or importation of a controlled drug or narcotic substance. Arrests for violations of state and local laws, specifically those relating to the unlawful possession, sale, use, growing, manufacturing, and making of narcotic drugs. Arrests for violations of state and local laws, specifically those relating to the unlawful possession, sale, use, growing, manufacturing, and making of narcotic drugs.

Disciplinary Referrals

Individuals referred to the office of the dean of Students for liquor law, drug law and illegal weapons violations. The data includes incidents that are reported via DPS incident reports and reports provided directly to the Deans of Students.

Liquor Law Violations

The violation of laws or ordinances prohibiting: the manufacture, sale, transporting, possessing of intoxicating liquor; maintaining unlawful drinking places; furnishing liquor to a minor or intemperate person; using a vehicle for illegal transportation of liquor; (Drunkenness and driving under the influence are not included in this definition).

Sex Offenses Definitions from the National Incident-Based Reporting System Edition of the Uniform Crime Reporting Program

Sex Offenses-Forcible

Any sexual act directed against another person, forcibly and/or against that person's will; or not forcibly or against the person's will where the reporter is incapable of giving consent. These offenses also include dating/domestic violence and stalking.

Rape

The penetration, no matter how slight, of the vagina or anus with any body part or object or oral penetration by a sex organ of another person without the consent of the reporting person.

Fondling

The touching of the private body parts of another person for the purpose of sexual gratification without consent of the reporting person, including instances where the reporting person is incapable of giving consent because of his/her youth or because of his/her temporary or permanent mental incapacity.

Sex Offenses-Non forcible

Unlawful, non- forcible sexual intercourse.

Incest

Sexual intercourse between persons who are related to each other within the degrees wherein marriage is prohibited by law.

Statutory Rape

Sexual intercourse with a person who is under the statutory age of consent.

VAWA Offenses

Any incidents of Domestic Violence, Dating Violence and Stalking. (Note that Sexual Assault is also a VAWA Offense but is included in the Criminal Offenses category for Clery Act reporting purposes)

Domestic Violence

A felony or misdemeanor crimes of violence committed; (1) by a current or former spouse of the reporting person; (2) by a person with whom the reporting person shares a child in common; (3) by a person who is cohabitating with or has cohabitated with the reporting person as a spouse or intimate partner; (4) by a person similarly situated to a spouse of the reporting person under violence laws of the jurisdiction receiving grant monies, or (5) by any other person against an adult or youth victim who is protected from that person's acts under the domestic or family violence laws of the jurisdiction in which the crime of violence occurred in which the crime of violence occurred, which includes roommates.

Dating Violence

Dating Violence is defined as violence committed by a person who is or has been in a social relationship of a romantic or intimate nature with the victim. The existence of such a relationship shall be determined based on the reporting party's statement and with consideration of the length of the relationship, the type of relationship, and the frequency of interaction between the persons involved in the relationship. For the purposes of this definition (1) Dating violence includes, but is not limited to, sexual or physical abuse or the threat of such abuse. (2) Dating violence does not include acts covered under the definition of domestic violence.

Stalking

Engaging in a course of conduct directed at a specific person, including without limitation by means of following, monitoring, observing, surveilling, threatening, or communicating to or about a person or interfering with a person's property, that would cause a reasonable person to fear for the safety of others or suffer significant mental suffering or anguish that may require medical or other professional treatment or counseling.

Unfounded

Crimes reported to campus authorities but are omitted from the crime statistics because they were later determined through investigation by sworn or commissioned law enforcement personnel to have been false or baseless when made.

Definitions of Geography

On-Campus: Any building or property owned or controlled by an institution within the same reasonably contiguous geographic area and used by the institution in direct support of or in a manner related to the institution's educational purposes, including residence halls; and any building or property that is owned by the institution but controlled by another person, is frequently used by students, and supports institutional purposes. Note: Statistics for university housing facilities are recorded and included in both the all on-campus category and the on-campus residential only category.

Non-Campus Building or Property: Any building or property owned or controlled by a student organization that is officially recognized by the institution; or any building or property owned or controlled by an institution that is used in direct support of or in relation to the institution's educational purposes, is frequently used by students, and is not within the same reasonably contiguous geographic area of the institution. Residence halls that are located outside the campus boundaries are captured in the non-campus category.

Public Property: All public property, including thoroughfares, streets, sidewalks, and parking facilities, that is within the campus or immediately adjacent to and accessible from the campus. The NJCU crime statistics do not include crimes that occur in privately owned homes or businesses within or adjacent to the campus boundaries.

Offense Definitions for Hate/Bias Related Crime Statistics as Per the UCR Hate Crime Reporting Guidelines

Hate Crime Data contains information about crimes that manifest evidence of prejudice based on race, religion, sexual orientation, ethnicity, and mental or physical disabilities. The FBI began to collect these data under the Hate Crime Statistics Act of 1990. Information contained in the data includes several reporters and offenders involved in each hate crime incident, type of reporters, bias motivation, offense type, and location type.

Bias-Related Acts

Behaviors that express hostility against a person, property, or group because of their real or perceived age, color, disability, gender identity or expression, marital status, military or veteran status, national origin, personal appearance, political affiliation, race, religion, sex, sexual orientation, or any other unlawful basis in any university-recognized area of student life. Bias acts may be verbal, graphic, or physical in nature. These behaviors often contribute to creating an unsafe or unwelcoming environment for individuals and social identity groups. Acts can qualify as bias acts even when delivered with humorous intent or presented as a joke or a prank.

Simple Assault

An unlawful physical attack by one person upon another where the offender does not display a weapon, and the reporter does not suffer severe or aggravated bodily injury involving apparent broken bones, loss of teeth, possible internal injury, severe laceration, or loss of consciousness.

Intimidation

To unlawfully place another person in reasonable fear of bodily harm through the use of threatening words and/or other conduct, but without displaying a weapon or subjecting the reporter to actual physical attack.

Destruction/Damage/Vandalism of Property (Except “Arson”)

To willfully or maliciously destroy, damage, deface, or otherwise injure real or personal property without the consent of the owner or the person having custody or control of it.

Larceny/Theft Offenses

The unlawful taking, carrying, leading, or riding away of property from the possession, or constructive possession of another. Attempted larcenies are included; embezzlement, confidence games, forgery, worthless checks, etc. are excluded.

Drug/Narcotic Offenses (Except “Driving Under the Influence”)

The violation of laws prohibiting the production, distribution, and/or use of certain controlled substances and the equipment or devices utilized in their preparation and/or use.

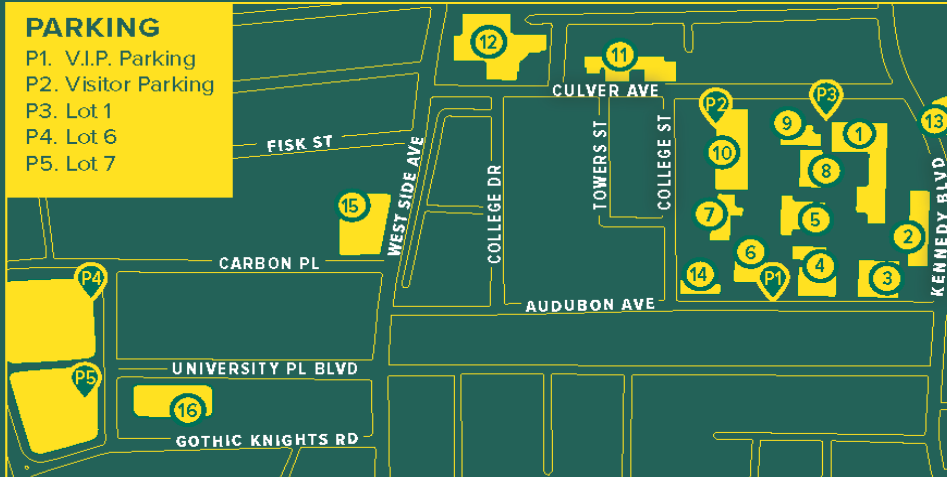
Campus Map

MAIN CAMPUS

2039 John F. Kennedy Blvd, Jersey City, NJ 07305

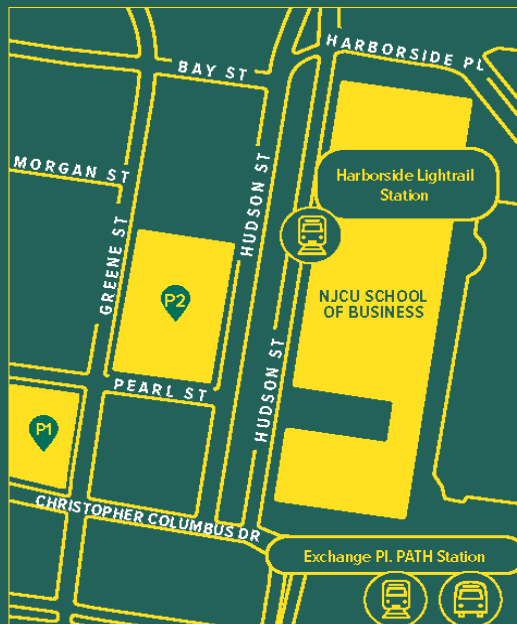
PARKING

- P1. V.I.P. Parking
- P2. Visitor Parking
- P3. Lot 1
- P4. Lot 6
- P5. Lot 7



CAMPUS MAP KEY

- | | | |
|--|--|---|
| 1. Hepburn Hall | 7. Science Building | 13. A. Harry Moore Laboratory School |
| 2. Grossnickle Hall | 8. George Karnoutsos Arts and Sciences Hall | 14. Co-Op Dormitory |
| 3. Congressman Frank J. Guarini Library | 9. Fries Hall | 15. NJCU Center for Workforce and Community Development |
| 4. Vodra Hall | 10. Gilligan Student Union | 16. West Village |
| 5. Rossey Hall | 11. Visual Arts Building | |
| 6. Education and Professional Studies Building | 12. John J. Moore Athletics and Fitness Center | |



SCHOOL OF BUSINESS

Harborside 2, 200 Hudson Street, Jersey City, NJ 07311

TRANSPORTATION

- Hudson Bergen Light Rail to Harborside Stop
- PATH to Exchange Place Station
- Bus to Exchange Place

PARKING

- P1. Central Parking, 110 Plaza 5
- P2. Central Parking, 135 Greene Street

Crime Statistics

	NJCU On- Campus	NJCU Residence Halls	NJCU Public Property	Ft. Monmouth Campus	Ft. Monmouth Public Property	School of Business Campus	School of Business Public Property	Grand Total
Murder/Non-Negligent Manslaughter								
2022	0	0	0	0	0	0	0	0
2023	0	0	0	0	0	0	0	0
2024	0	0	1	0	0	0	0	1
Negligent Manslaughter								
2022	0	0	0	0	0	0	0	0
2023	0	0	0	0	0	0	0	0
2024	0	0	0	0	0	0	0	0
Rape								
2022	0	1	0	0	0	0	0	1
2023	0	0	0	0	0	0	0	0
2024	0	0	0	0	0	0	0	0
Fondling								
2022	2	0	0	0	0	0	0	2
2023	2	1	0	0	0	0	0	2
2024	0	0	0	0	0	0	0	0
Incest								
2022	0	0	0	0	0	0	0	0
2023	0	0	0	0	0	0	0	0
2024	0	0	0	0	0	0	0	0
Statutory Rape								
2022	0	0	0	0	0	0	0	0
2023	0	0	0	0	0	0	0	0
2024	0	0	0	0	0	0	0	0
VAWA								
Domestic Violence								
2022	0	0	4	0	0	0	0	4
2023	0	0	0	0	0	0	0	0
2024	0	0	1	0	0	0	0	1
Dating Violence								
2022	0	0	0	0	0	0	0	0
2023	0	0	0	0	0	0	0	0
2024	0	0	0	0	0	0	0	0
Stalking								
2022	0	0	0	0	0	0	0	1
2023	0	0	0	0	0	0	0	0
2024	0	0	0	0	0	0	0	0
Robbery								
2022	0	0	0	0	0	0	0	0
2023	0	0	0	0	0	0	0	0
2024	0	0	1	0	0	0	0	1

	NJCU On- Campus	NJCU Residence Halls	NJCU Public Property	Ft. Monmouth Campus	Ft. Monmouth Public Property	School of Business Campus	School of Business Public Property	Grand Total
Aggravated Assault								
2022	1	1	0	0	0	0	0	0
2023	2	2	1	0	0	0	0	0
2024	1	0	1	0	0	0	0	2
Arson								
2022	0	0	0	0	0	0	0	0
2023	0	0	0	0	0	0	0	0
2024	0	0	0	0	0	0	0	0
Burglary								
2022	0	0	0	0	0	0	0	0
2023	0	0	0	0	0	0	0	0
2024	0	0	0	0	0	0	0	0
Motor Vehicle Theft								
2022	0	0	0	0	0	0	0	0
2023	1	0	0	0	0	0	0	1
2024	2	0	0	0	0	0	0	2
ARREST								
Drug Law Violations								
2022	1	0	0	0	0	0	0	1
2023	0	0	0	0	0	0	0	0
2024	0	0	0	0	0	0	0	0
Liquor Law Violation								
2022	0	0	0	0	0	0	0	0
2023	0	0	0	0	0	0	0	0
2024	0	0	0	0	0	0	0	0
Weapon Law Violation								
2022	0	0	0	0	0	0	0	0
2023	3	0	0	0	0	0	0	0
2024	1	0	1	0	0	0	0	2
REFERRAL								
Drug Law Violations								
2022	41	40	0	0	0	0	0	41
2023	18	14	0	0	0	0	0	18
2024	9	3	0	0	0	0	0	9
Liquor Law Violation								
2022	18	18	0	0	0	0	0	18
2023	4	3	0	0	0	0	0	4
2024	3	0	0	0	0	0	0	3
Weapon Law Violation								
2022	2	0	0	0	0	0	0	2
2023	4	1	0	0	0	0	0	4
2024	1	0	0	0	0	0	0	1
Unfounded								
2024	0	0	0	0	0	0	0	0

Hate Crimes

New Jersey City University strives to foster a safe and healthy learning environment that embodies diversity and inclusion of all members of the NJCU community. The Hate Crime statistics are separated by category of prejudice. The numbers for most of the specific crime categories are part of the overall statistics reported for each year. The only exceptions to this are the addition of simple assault, intimidation, and any other crime that involves bodily injury that is not already included in the required reporting categories.

A Hate Crime is defined as a criminal act and/or attempting, aiding, abetting, advising, inciting, conniving, or conspiring to commit a criminal act (such as arson, assault, burglary, injury to property, kidnapping, manslaughter, murder, rape, robbery, theft, or unlawful entry) based on the actual or perceived race, color, religion, national origin, sex, age, marital status, personal appearance, sexual orientation, gender identity or expression, family responsibility, homelessness, physical disability, matriculation, or political affiliation of a victim of a criminal act. Hate crimes under various federal laws have similar definitions.

If a Hate Crime occurs where there is an incident involving intimidation, vandalism, larceny, simple assault or other bodily injury, the law requires that the statistic be reported as a hate crime. **Note:** A hate or bias related crime is not a separate, distinct crime, but is the commission of a criminal offense which was motivated by the offender's bias.

For example, a subject assault a victim, which is a crime. If the facts of the case indicate that the offender was motivated to commit the offense because of his / her bias against the victim's race, sexual orientation, gender, religion, ethnicity, or disability, the assault is then also classified as a hate / bias crime. Most speech is not a hate crime, regardless of how offensive it may be.

Hate Crimes Statistics

Hate Crime Statistics Reported by the NJCU Department of Public Safety are reported in accordance with Uniform Crime Reporting Procedures and the Jeanne Clery Disclosure of Campus Security Policy and Campus Crime Statistics Act

2022: No hate crime incidents reported

2023: No hate crime incidents reported

2024: No hate crime incidents reported

Annual Fire Safety Report on Student Housing



Introduction

New Jersey City University (NJCU) Department of Public Safety's, Fire Safety Program, was instituted to protect students, faculty, staff, visitors, and facilities from the dangers of fires, explosions, and hazardous conditions which may cause injury or damage. Our program is designed to meet and exceed compliance with Federal Laws, State of New Jersey Fire Prevention Requirements and local laws governing basic life safety and campus protection.

Programs include fire evacuation drills, fire safety education for students, faculty, and staff, fire inspections of campus buildings and public assembly events, emergency procedure planning and training, fire data analysis, code consultation, general fire safety issue consultation, and coordination and issuance of required permits. We also participate in construction plan review.

At NJCU, we believe that effective fire safety occurs when human elements are appropriately interfaced with modern technological advancements. To accomplish our mission, we pursue an aggressive program geared at:

- Training in fire safety awareness for the University Community.
- Fire Safety inspections to ensure Code Compliance.
- Installation, maintenance, and inspection of fire protection equipment.

Higher Education Opportunity Act

New Jersey City University through its Fire Safety Program maintains its compliance with the federal regulations of the Higher Education Opportunity Act (HEOA) and the Fire Safety Right to Know Act. We are committed to providing a safe campus environment for our students, faculty, and staff by complying with and going beyond the requirements of the act. The Jeanne Clery Act information can be found on the [NJCU Department of Public Safety website](#).

Institutions with on-campus housing facilities must publish an annual fire safety report that provides information on the fire safety practices and standards in the housing facilities. NJCU complies with this regulation by including all fire-related incidents at on-campus student housing facilities through its monthly report generated as part of its Fire Safety Program. This monthly report provides the fire-related incidents for on-campus student housing and all its university owned and operated buildings.

Included in the report are the number and cause of fires in all on-campus student housing facilities; number of fire-related deaths; related injuries; value of fire-related property damage; information on evacuation procedures; fire safety education and training programs; fire safety systems in each student housing facilities; number of regularly supervised fire drills; fire alarm responses; policies on portable electrical appliances, smoking and open flames.

Fire Statistics

For the **2024** year, there have been no fires reported at New Jersey City University in any student housing facilities. In addition, there have been no injuries, deaths, or property damage due to fires.

NJCU Residential Housing Facilities	Total Fires in each building	Fire Number	Date & Time	Cause of Fire	Number of injuries that required medical treatment	Number of deaths related to a Fire	Value of property damage caused by a Fire
West Campus Village	0	0	n/a	n/a	0	0	n/a

On-Campus Student Housing and Life Safety Systems

All resident buildings are fully equipped with sprinkler and standpipe systems. Apart from two university buildings, all other business and academic buildings are equipped with sprinklers and standpipe systems as well. Additionally, all buildings on and off campus are equipped with an automatic fire detection and alarm systems.

These systems are monitored by the Department of Public Safety in the communications center 24 hours a day, 365 days a year. The operator can pinpoint the location of a fire, heat, or smoke condition with the use of the Truesite Workstation (TSW) at the communication center or at the Fire Alarm Panel. This TSW allows a Public Safety Communications Officer to monitor over 4,200 devices in over 20 buildings at one time.

NJCU Residential Housing	Fire Alarm Monitoring done on-site by DPS	Full Sprinkler System	Smoke Detection Throughout	Fire Extinguishers Throughout	Evacuation Plans posted Throughout
West Campus Village	No	Yes	Yes	Yes	Yes

Fire Safety Policies for On-Campus Student Housing Facilities

Included in the report are the number and cause of fires in all on-campus student housing facilities; number of fire-related deaths; related injuries; value of fire-related property damage; information on evacuation procedures; fire safety education and training programs; fire safety systems in each student housing facilities; number of regularly supervised fire drills; fire alarm responses; policies on portable electrical appliances, smoking and open flames.

Smoking / Vaping: Prohibited inside the Residence Halls. According to New Jersey State Law, effective, October 21, 2005, smoking of any tobacco containing product (including vaping) is not permitted in any college operated facility that serves as a student residence. The University has designated areas outside the residence halls available to smokers. Violators face disciplinary sanctions as well as financial responsibility for the violations.



Open Flame: Fire or smoke producing articles are not permitted to be burned in the Residence Halls.



The following is a list of prohibited items that are considered a violation in the Residence Halls and are subject to revision by the Division of Safety & Security as needed.

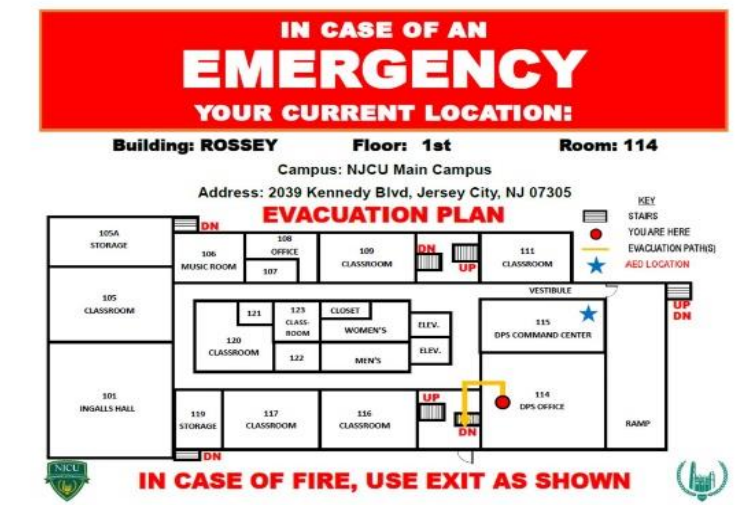
- Unmanned Aircraft System (UAS), commonly known as a drone.
- Bunsen burners
- Lanterns/oil lamps and flammable liquids
- Kerosene / halogen lamps
- Candles, incense, air fresheners with plug in adapter, fragrance burners
- Live holiday decorations / vegetation (holiday trees, garlands, etc.)
- Fireworks, explosives, or any highly volatile chemical material
- Combustible decorations / items / fuels
- Space heaters and air conditioners
- Lighter fluid liquids (Naphtha)
- Chemical mace and/or pepper spray
- Electrical heat-producing appliances, such as portable stoves, hot plates, microwaves crock pots, waffle irons, percolators, toasters, toaster ovens, George Foreman grills, sandwich makers, popcorn poppers, etc.
- *Non-Institutional Furniture

***Non-Institutional Furniture:** No couches, chairs, futons, inflatable mattress/furniture, or other upholstered furniture are permitted in university housing unless a resident can provide manufacturers' certification that the furniture meets California Technical Bulletin 133 for fire retardant upholstered furniture.

Emergency Evacuation in Case of Fire

New Jersey City University conducts announced and unannounced scheduled fire drills at various hours throughout the day and evening. Special emphasis is placed on the residence halls. In addition, all fire drill reports are kept on file for review by the NJ Division of Fire Safety and the Jersey City Fire Prevention Bureau.

If a student, faculty, or visitor should need to report a fire anywhere on campus, the Department of Public Safety should be notified at **201-200-3128** or by dialing “**3128**” from on campus telephone. All occupants will evacuate the buildings immediately in the event of a fire or alarm and shall comply with posted evacuation procedures.



- If students encounter heat and/or smoke in the hallway, leave the room, carefully closing the door and proceed to the nearest exit/stairwell.
- Always use the stairs to evacuate the building; never use the elevator during a fire or fire alarm.
- If students encounter smoke, they are to take short breaths through their nose and stay as close to the floor, crawling, if possible.
- Once outside the building, Department of Public Safety staff will help guide you to a safe area of refuge for the duration of the incident.
- Disabled persons who require assistance in evacuating should stay near their doors until assistance arrives.
- Evac-U-Trak chairs are available in some locations for safe evacuation from the building.
- Always ask someone with a disability how you can help before attempting to give any assistance.
- Remember, students are not expected to fight fires.

Training

The Fire Safety Manager or designee conducts workshops during freshmen and residence life orientation each year. Workshops are also available to all university members upon request at any time. University Staff members who hold NJ Fire Inspector/Fire Official Certification attend continuing education programs each year. The following are examples of training:

- NJCU fire extinguisher vendors conduct on-campus fire extinguisher classes for the protection of faculty, staff, and students.
- The Jersey City Fire Department conducts drills on campus of the various campus buildings covering all shifts. *Special emphasis is given to residence halls.*
- The Department of Public Safety conducts fire drills in all buildings, in addition to those conducted with the Jersey City Fire Department.
- Fire safety awareness programs/ activities are held during Fire Prevention month (October) that include dormitory fire safety workshops, portable hands-on fire extinguisher training, fire safety presentations, and educational activities.
- Familiarization tours are conducted with the Jersey City Fire Department on a periodic basis.
- Public Safety Personnel are cross- trained to conduct inspections of the campus facilities to recognize the hazards and risks associated with fire and life safety.
- Public Safety Personnel are also trained in properly using Evac-U-Trak chairs to evacuate persons with disabilities.

Health and Safety Inspections

University staff conducts health and safety inspections in all the university buildings and grounds. Health and Safety inspections include the documentation, testing and examination of exit / emergency lighting, emergency phones, Evac-U-Trak chairs, fire extinguishers, automatic external defibrillators, emergency generators, fire pumps and related valves and equipment.

Resident Hall inspections are conducted in collaboration with the office of Residence Life, Facilities and Construction Management and Housekeeping. These inspections are performed at least bi-annually and are designed to identify health and safety conditions which could potentially cause harm to a resident or other community members of the university.

The inspections include but are not limited to, the removal or tampering of fire and life safety equipment, a visual examination of electrical cords, sprinklers, smoke detectors, fire extinguishers, and the presence of any prohibited items.

Residential rooms are also examined for proper door closure operation and include a general assessment of overall cleanliness, food, and waste storage.

Conditions warranting actions from violations that would be detrimental to the residents or other members of the university community are reported to the Director of Residence Life and the Dean of Students. If necessary, applied sanctions can range from fines to expulsion from housing and prohibited items are confiscated.

Specific Health and Safety policies and procedures are outlined in the Resident Life Handbook as well as the Occupancy Agreement.

Residence Life staff may enter any room at any time for the purposes of inspections, establishment of order, maintenance, or in case of emergency or other reasonable cause.

Fire Drill Procedure

- Fire drills will be initiated by the activation of a device setting off the horns and strobes located throughout the building.
- All faculty, staff, and students must respond immediately and move quietly to the nearest exit in an orderly fashion. This shall happen regardless of whether it is a drill or an actual emergency.
- All members of the University community must follow the rules of safety by quickly clearing the corridors and exits and moving 100 feet away from the building to assigned assembly areas.

Note:

- Do not use elevators.
- Close all doors but do not lock.
- Do not re-enter the building until notified by the Department of Public Safety in conjunction with the Fire Department.

Definitions

Fire: rapid oxidation of combustible material accompanied by heat, light and smoke of combustible material, which is found outside of its normal appliance, whether it is extinguished prior to arrival of emergency.

Fire-Related Deaths: Number of persons who were fatalities because of a fire incident, including death resulting from a natural or accidental cause while involved in fire control, attempting a rescue, or persons escaping from the fire scene (an individual who dies within one (1) year of injuries sustained because of a fire).

Fire-Related Injuries: Number of persons receiving injuries from fire-related incidents, including an injury from a natural or accidental cause who received medical treatment at a local medical facility. This includes first responders attempting to control the fire, attempting a rescue, or persons escaping from the fire scene. Persons may include students, faculty, staff, visitors, firefighters, or any other individuals.

Estimated U.S. Dollar Loss Related to Fire Incidents: Estimated total U.S. dollar loss of both contents and structure or property destroyed because of a fire incident, not loss of business.

Evacuation Procedures: When a fire alarm is activated, evacuation is mandatory. **DO NOT** use elevators; evacuate the building using the nearest available exit and proceed to the assembly area to begin an accountability and assessment process.

Fire Alarm Monitored by the Truesite Workstation: Fire Alarms are monitored 24 hours a day, seven days a week, and 52 weeks a year within the Department of Public Safety dispatch center.

Fire Safety Training Programs Delivered: Number of training programs delivered by Fire and Safety Services to occupants of residence halls concerning fire prevention and preparedness.

Building Equipped with Fire Alarm Systems and Smoke Detectors: Buildings that have functional fire alarm systems and smoke detectors installed. Please note all residence halls are equipped with functional fire alarm systems and smoke detectors.

Buildings Protected with Automatic Sprinkler System Throughout: Indicates an automatic sprinkler system protects all areas of a building. Please note all residence halls are equipped with sprinkler systems throughout. All systems are wet-pipe systems.

Emergency Evacuation Drills (formerly known as Fire Drills): The numbers of supervised scheduled fire drills or actual events at campus residence halls are facilitated by the Fire Safety Coordinator and documented in cooperation with assigned Department of Public Safety personnel. Various drills are conducted throughout the year to familiarize students, faculty and staff with emergency procedures and individual roles.

Additional Resources

Strategic Partners in Protection

Information Technology Services

Residence Life Services

Office of Student Services

Facilities and Construction Management

Public Sector Partners

Department of Community Affairs, Bureau of Fire Safety

Jersey City Fire Department

Private Sector Partners

Johnson Controls

FM Global

AllComm Technologies

Fire Safety Staff

Fire Official/Fire Safety Manager

Fire Prevention Officer

Department of Public Safety

E-mail: firesafety@njcu.edu

Telephone Numbers

Main Number:

201-200-2000

Department of Public Safety:

Dispatch: 201-200-3128

Administration: 201-200-3127

Residence Life:

201-200-2338

Office of the Dean of Students:

201-200-3525

New Jersey City University
Department of Public Safety
2039 Kennedy Boulevard
Jersey City, New Jersey 07305
Phone: 201-200-3128
Fax: 201-200-2240
E-mail: publicsafety@njcu.edu