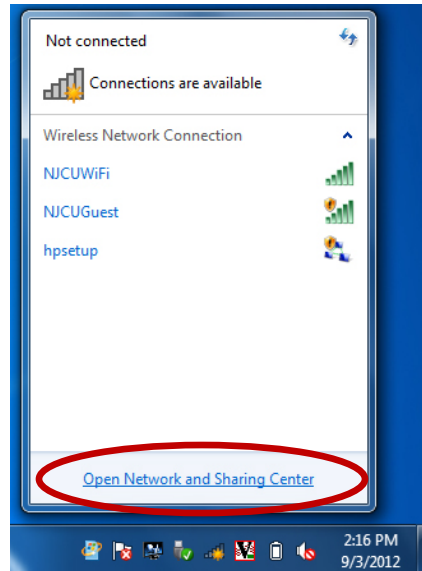


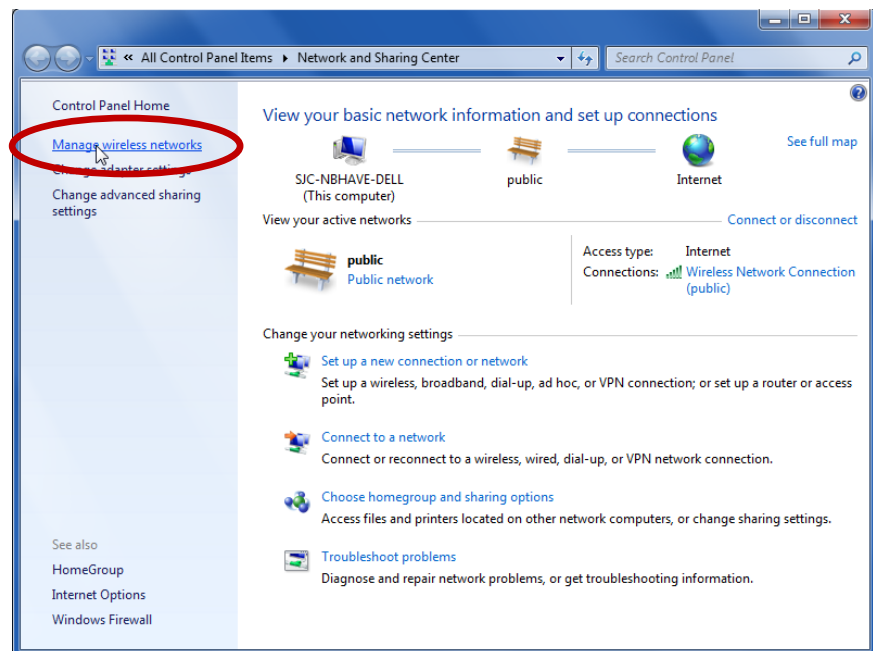
## Accessing NJCU Wifi on Windows 7 Computers

These instructions will assist in connecting your Windows 7 computer to the “NJCUWifi” network. Please note these instructions are for reference only, and some devices might have varying themes, menu options and might require less or additional steps to be taken to connect.

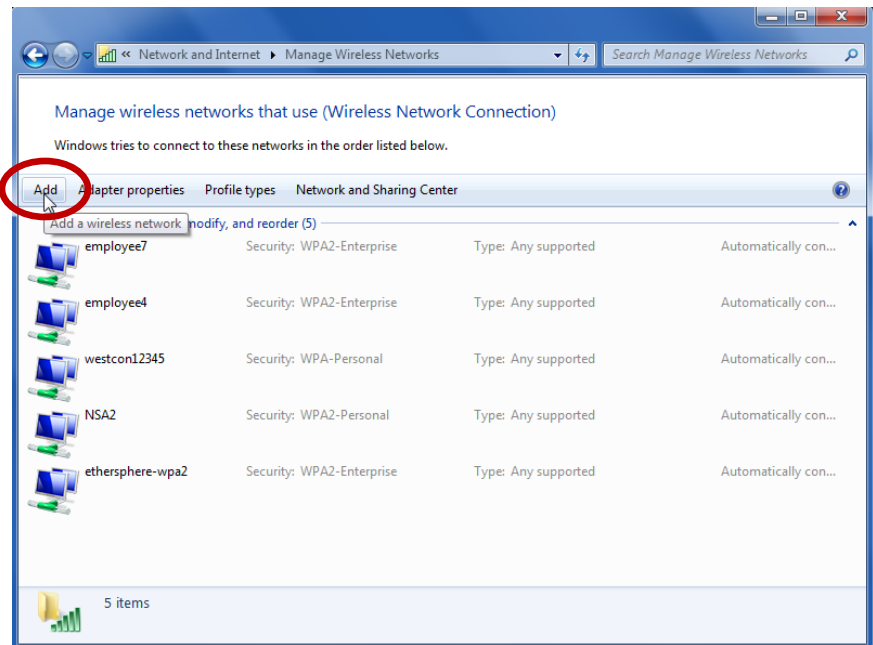
1. Click on wireless icon in taskbar & click on **‘Open Network and Sharing Center’**



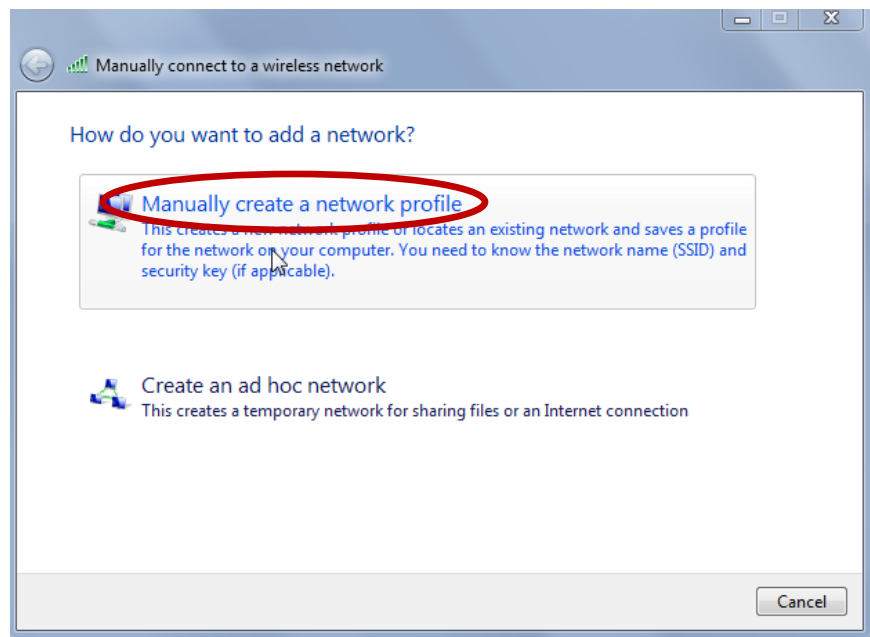
2. Click on **‘Manage Wireless Networks’**



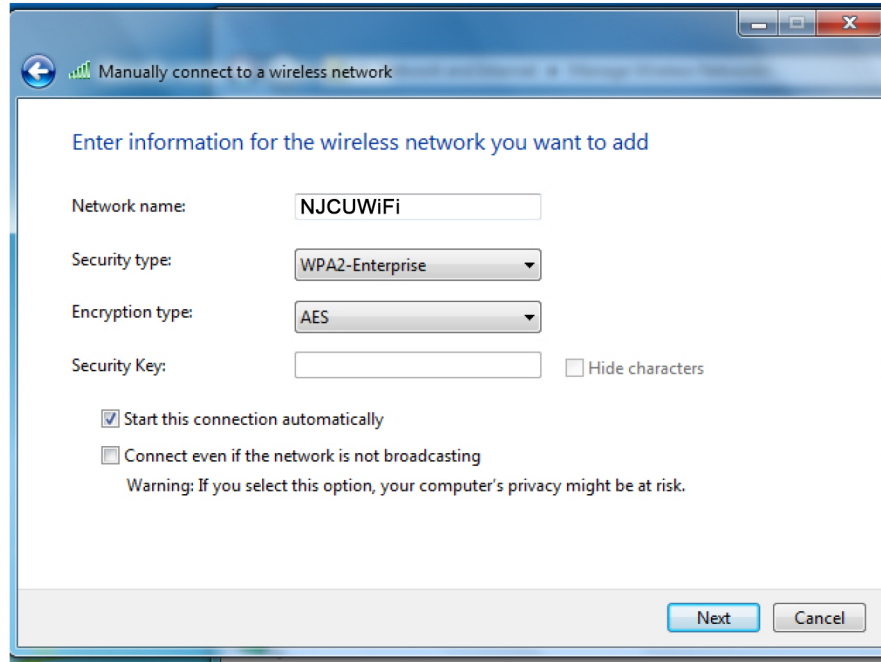
### 3. Click 'Add'



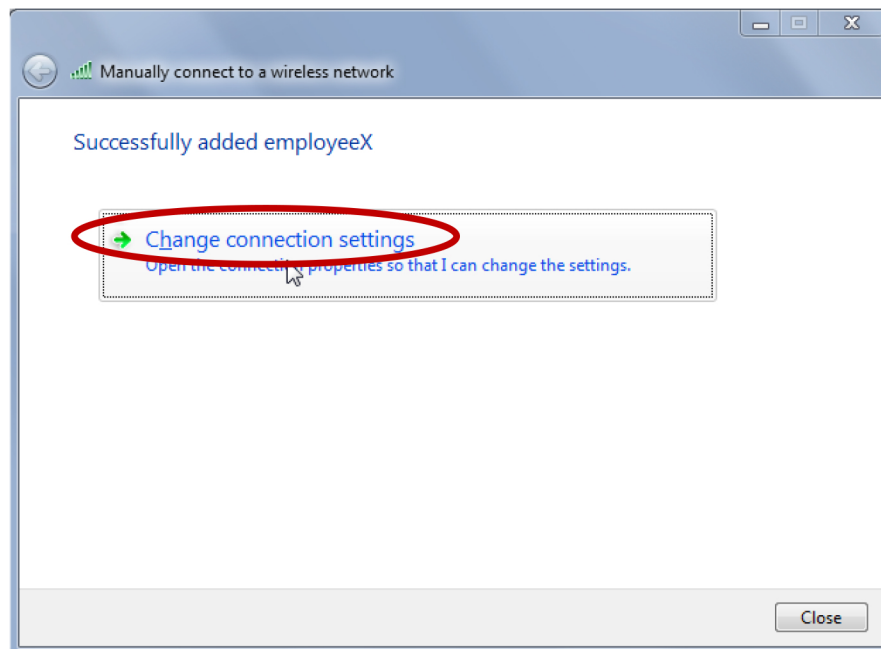
### 4. Click 'Manually Create'



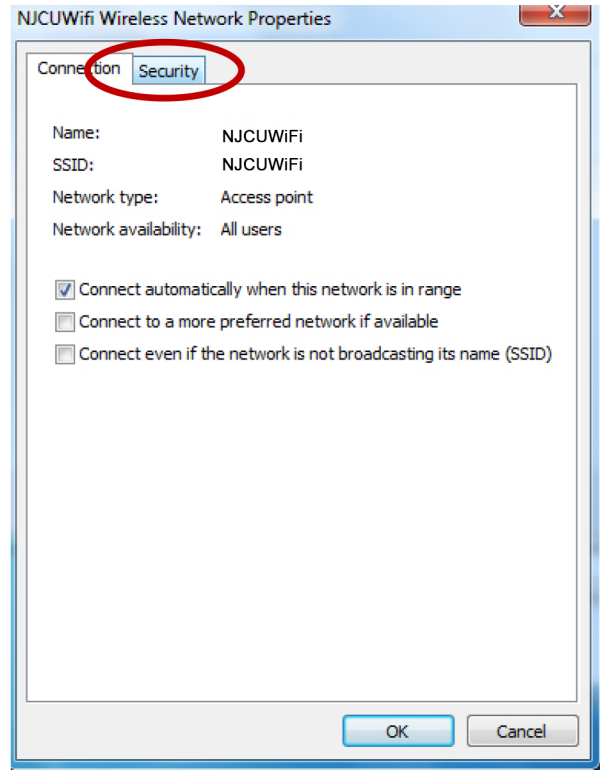
5. Configure as shown in the diagram below, please make sure you type "NJCUWiFi" exactly
6. Click 'Next' to continue.



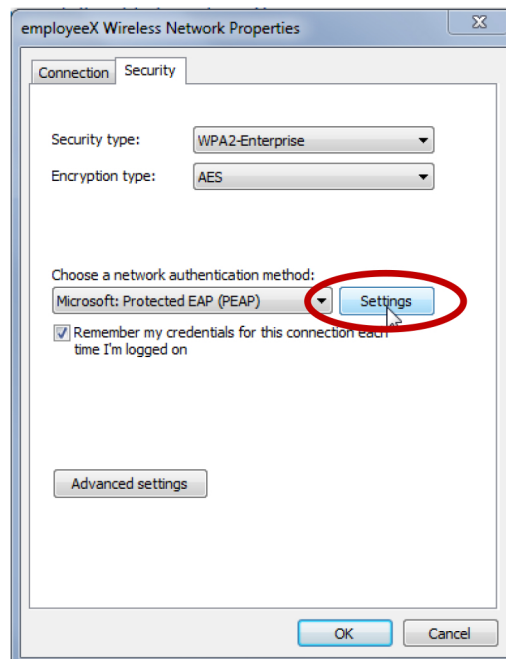
7. Click 'Change Connection Settings'



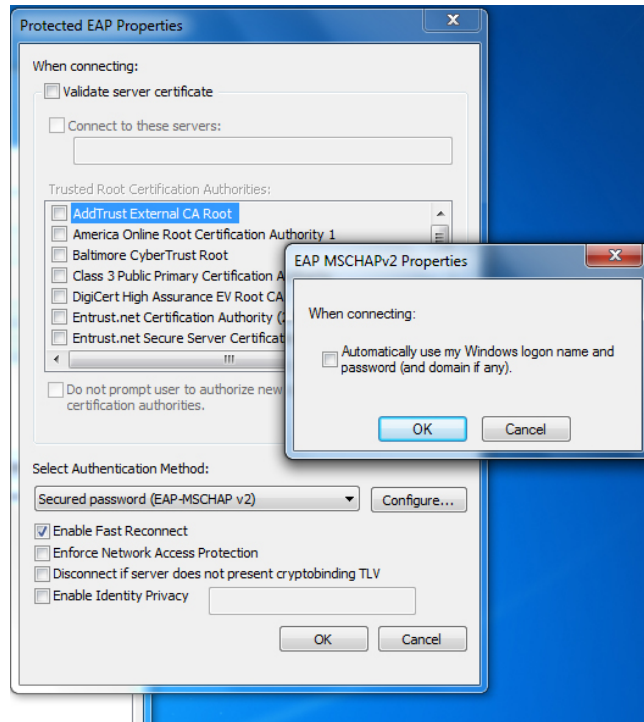
## 8. Click on 'Security' tab



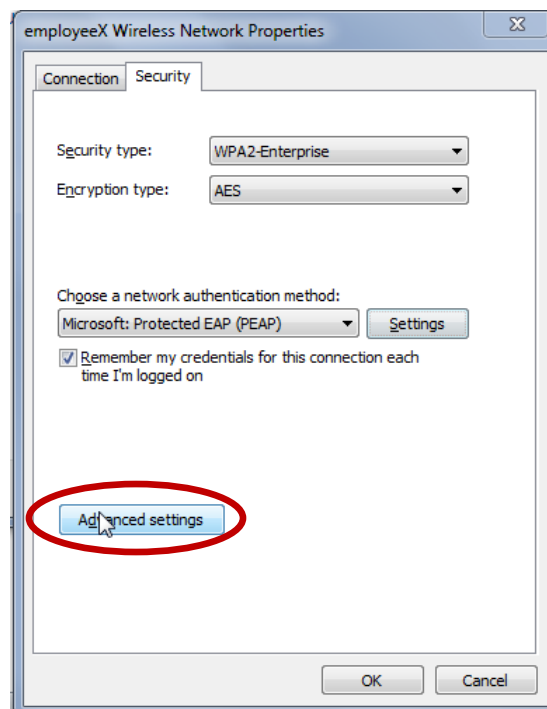
## 9. Click on 'Settings'



10. Uncheck **Validate Server Certificate**,
11. Click on **'Configure'**
12. Uncheck **'Automatically use my Windows logon name...'**,
13. Click on **'Configure'**
14. Uncheck **'Automatically use my Windows logon name...'**
15. Click **'OK'** and **'OK'** again.

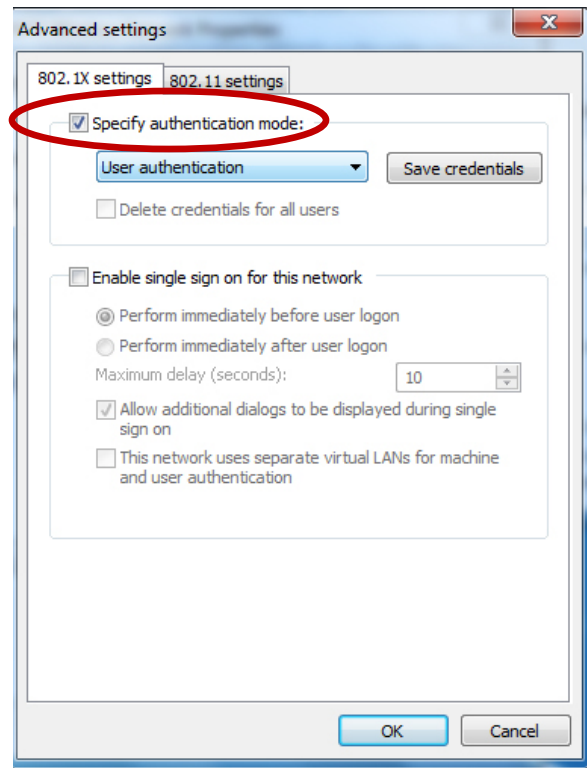


16. Click on **'Advanced Settings'**



**17. Check 'Specify Authentication Mode' Choose "User Authentication"**

**18. Click 'OK' and 'OK' again. (The second OK exits setup)**



**19. Connect to your NJCUWiFi network using your gothicnet credentials.**



**You are now connected to the NJCUWiFi network!**

If you require additional assistance, please submit your help request through our [online WiFi Help Form](#).