



NJCU VPN SETUP AND REMOTE CONNECTION INSTRUCTIONS

The following instructions will detail the steps required to install and utilize the Virtual Private Network (VPN) service. VPN access to the NJCU campus network will allow you to connect remotely to IT resources within the NJCU network. Please read these instructions carefully.

There are 2 ways to utilize NJCU's VPN functionality:

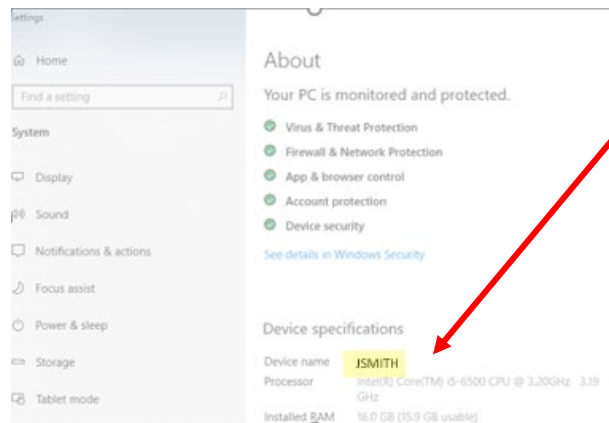
1. If you wish to remotely connect to network resources to access GothicNet and your network storage drives (i.e. T: and X: drives), then VPN access alone will suffice. (Follow steps 1 through 12)
2. If in addition to accessing network resources through VPN, you wish to connect to your office computer as though you are sitting in front of that computer, you will need to utilize Remote Desktop Connection. (Follow steps 1 through 14)

To connect to your NJCU computer remotely, you will need to know the HOSTNAME assigned to your computer.

- On Windows 10 on your computer, type the word Settings into the Search Bar in the bottom left corner of your screen.



- Your HOSTNAME will appear under Device Name. Save the HOSTNAME to use in Step 14 below.

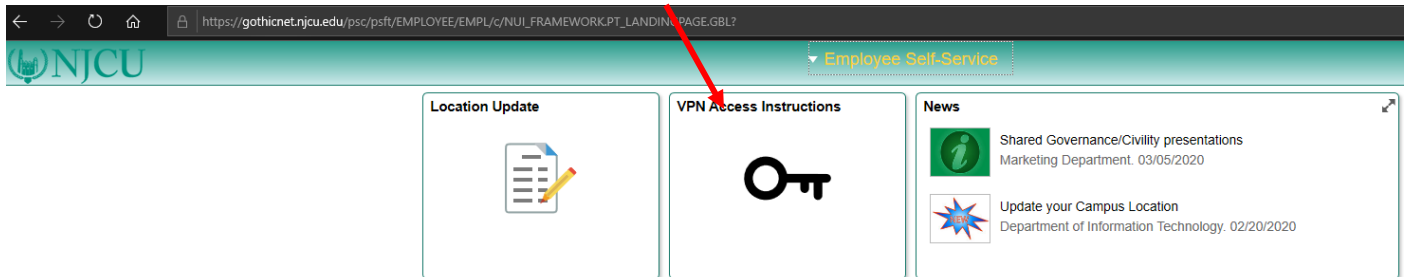


To access Remote Desktop Connection from home, the power on your NJCU computer must be left **ON**.

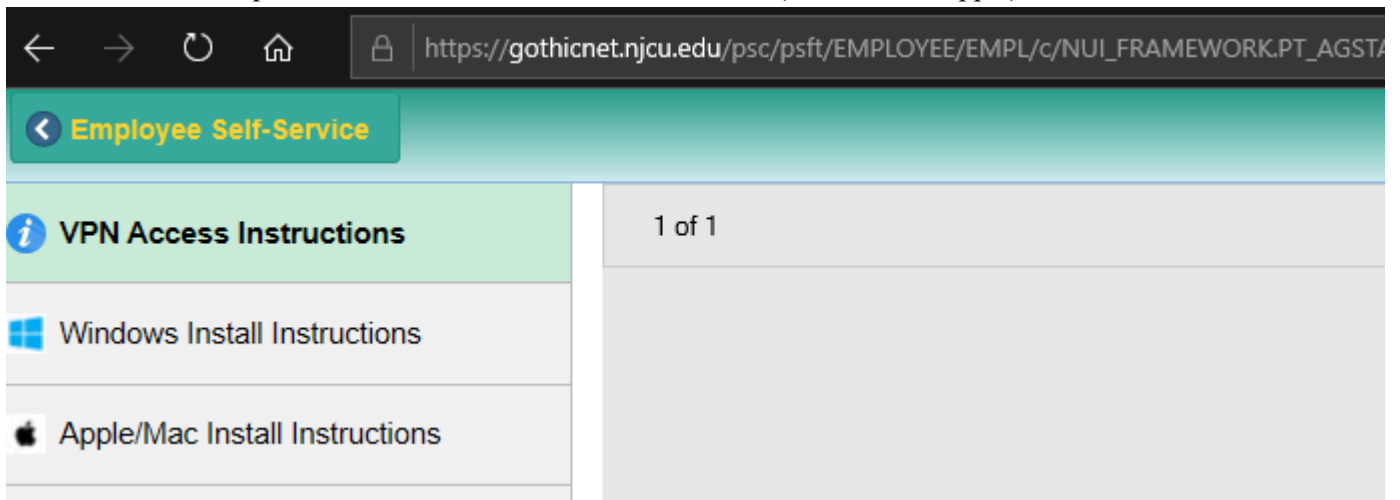
INSTALLING THE VPN CLIENT ON WINDOWS

Please follow these steps to install the VPN Client on your personal computer so you can connect to the NJCU network remotely.

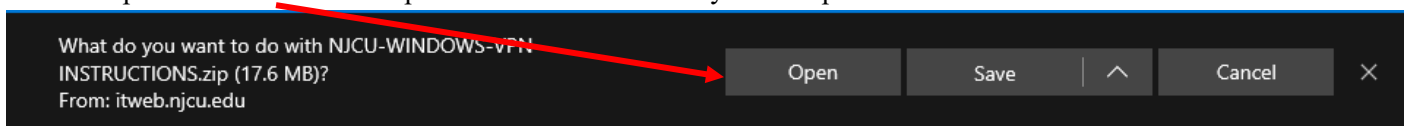
1. After logging into GothicNet, Click on **VPN Access Instructions** tile.



2. Click on the pertinent VPN Access instruction document (Windows or Apple)



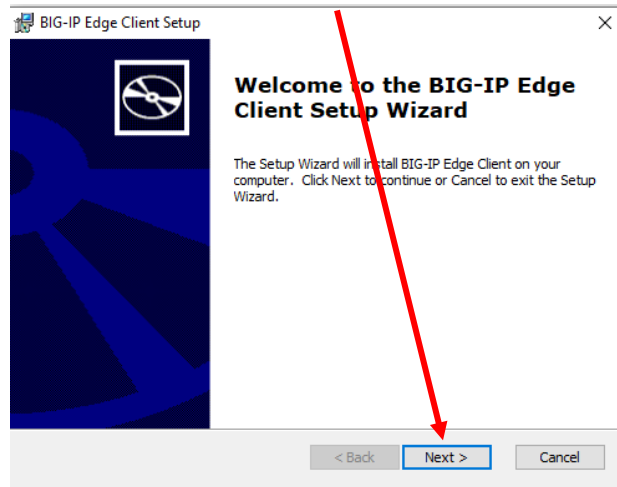
3. Open VPN instructions zip folder to download it to your computer



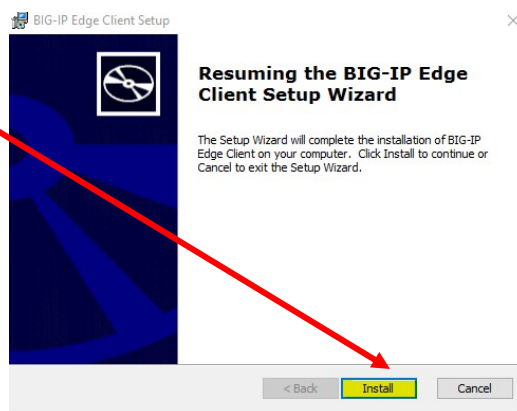
4. After you've unzipped the VPN instructions folder, click on BIGIPEdgeClient.exe.



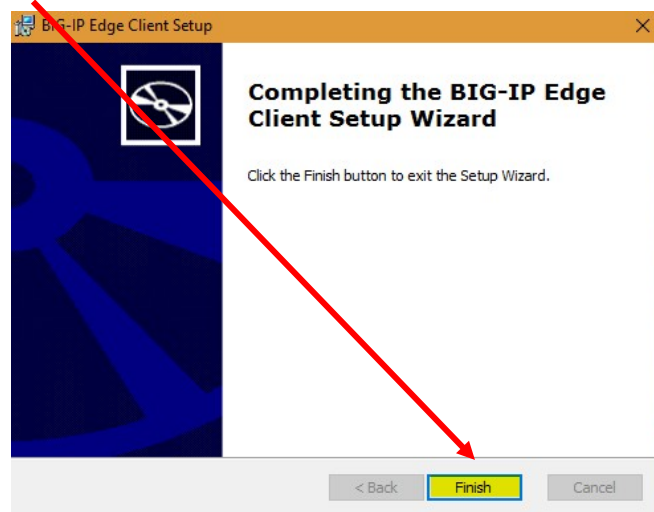
5. This will launch the BIG-IP Edge install wizard. Click Next to begin install



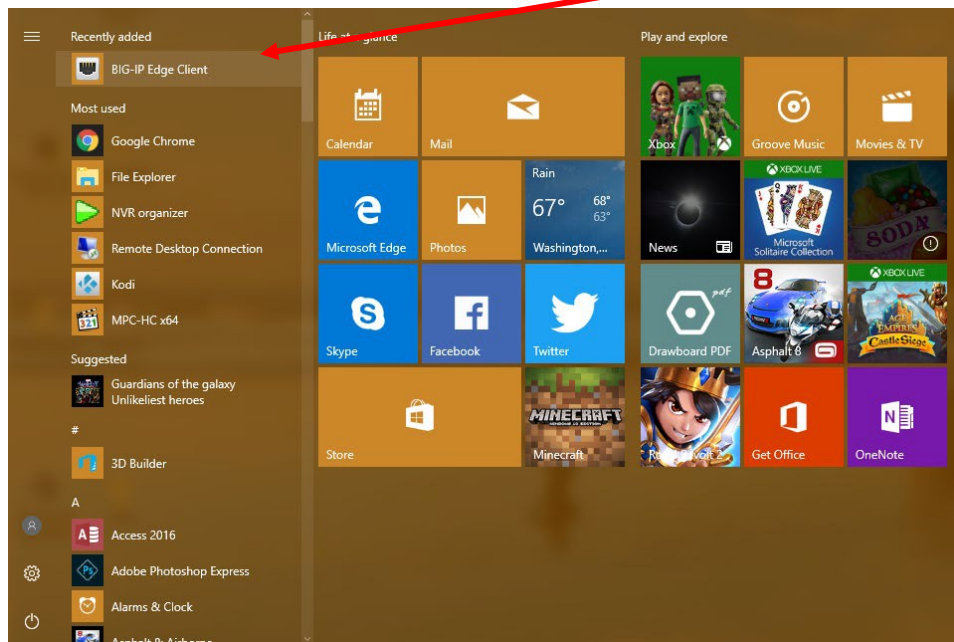
6. Click the Install button to start the installation process:



7. The install will take a few moments. Once it is done, click on the Finish button.

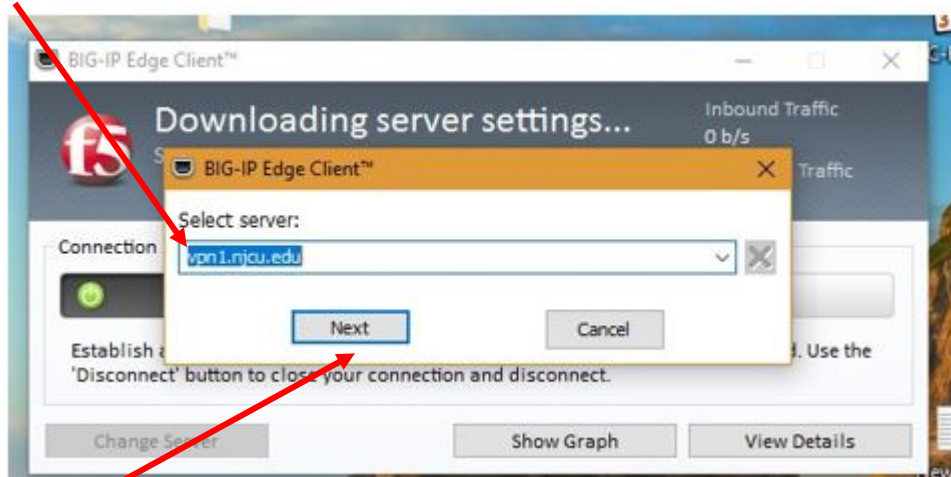


8. Click on BIG-IP Edge Client application in the start menu. It will appear under Recently added.



9. When the VPN Client opens (the first time only) you will need to input the server name.

vpn1.njcu.edu



10. Click Next to connect to the VPN system.

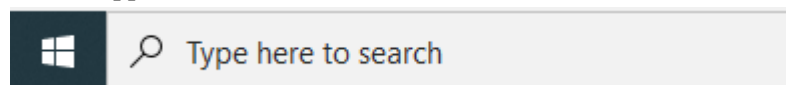
11. You will be prompted to enter your NJCU GothicNet login credentials.

A vertical login screen with a yellow background. At the top left is the F5 logo. The text "Secure Logon for F5 Networks" is centered. Below it are two input fields: "Username" and "Password" (masked with asterisks). A "Logon" button is below the password field. At the bottom, it says "NJCU Dept. of IT ** DATACOM**".

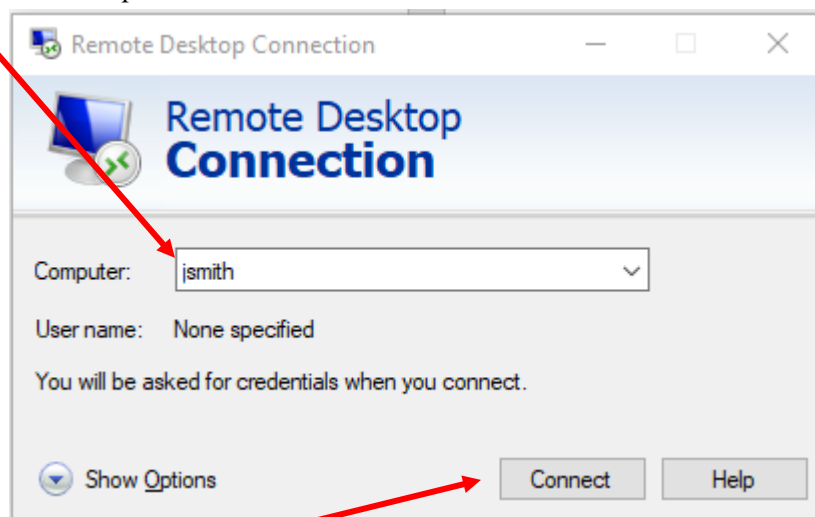
12. You are now connected to the NJCU VPN network. **You will be able to access your network drives (T:, X: and log into GothicNet using your browser.** You can view the F5 icon by clicking on the arrow in the lower right corner of your screen. You can click on Disconnect when you wish to end your VPN session



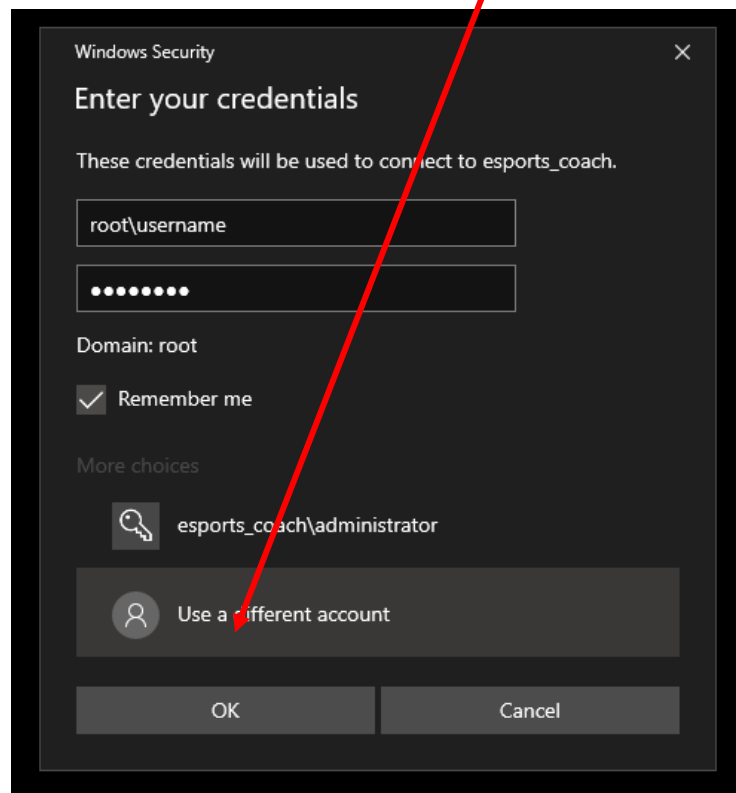
13. To remotely connect to your NJCU computer. Enter Remote Desktop in Search Bar and select **Remote Desktop Connection** application



14. Enter your NJCU computer HOSTNAME and click Connect as shown in the example below...



After you click Connect, select Use a different account.



This will allow you to enter **root** followed by your NJCU Username

If you need any assistance or have any further questions, please contact the NJCU Help Desk:
helpdesk@njcu.edu

Email