



THE DEBORAH CANNON PARTRIDGE WOLFE COLLEGE OF EDUCATION

ED.D. IN COMMUNITY COLLEGE LEADERSHIP

Three-Year Online Program



Developing Leaders at All Levels

This practice-focused 55-credit online program with 1-week summer institutes is designed to be completed by working professionals in 3 years. Recognizing the need for future leaders in the community college sector, the program aims to develop graduates who:

- Use an evidence-based approach to decision making and leadership, with a focus on the goal of increased rates of student completion and success.
- Promote culturally responsive pedagogical and supportive practices that are grounded in theory and research.
- Engage in partnerships to champion the mission of the community college and lead various reform efforts aimed at reducing equity gaps.
- Effectively engage in strategic planning and assessment and clearly communicate vision and data to various stakeholders.

Graduates may expect to find success as:

- Mid-level and high-level administrators
- Teaching and learning center directors
- Leaders of student success initiatives
- Faculty and student services leaders

Unique Features

PRACTICE-FOCUSED.

Coursework and dissertation are based on the scholarly-practitioner model, meaning the application of theory and research is emphasized.

MENTORING AND EXPERIENTIAL LEARNING.

Students will engage with professional mentors in the field and gain meaningful consulting or project-based learning experiences in the community college setting.

HIGH-LEVEL SUPPORT WITH A PROGRAM EVALUATION DISSERTATION.

To ensure timely completion of the dissertation, students will receive individual and course-level guidance as they identify a problem of practice and engage in a rigorous evaluation of the effectiveness of a program, practice, or policy.

ONLINE, COHORT-BASED APPROACH.

Engaging and authentic asynchronous online learning experiences combined with occasional live online sessions and a week-long summer institute give students the opportunity to build a sense of community while providing the flexibility that working professionals need.

CURRICULUM

YEAR I	YEAR II	YEAR III
Summer	Summer	Summer
Community College Leadership Institute 1	Innovative Teaching Practices and Modalities 3	Strategic Human Resource Management 3
Community Colleges: Past, Present, and Future 3	Mentoring I 1	Mentoring II 1
Fall	Fall	Fall
Leadership Theory and Change Management 3	Educational Research II 3	Curricular and Instructional Leadership 3
The Scholarly Practitioner 3	Strategic Planning, Assessment, and Innovation 3	Student Services Leadership 3
	Experiential Learning I 2	Dissertation in Practice II 2
Spring	Spring	Spring
Promoting Equity: Teaching and Supporting Diverse Adult Learners 3	Community College Finance 3	Legal Issues, Policies, and Ethical Practices in the Community College 3
Educational Research I 3	Experiential Learning II 2	Critical Role of Partnerships in Community College Leadership 3
	Dissertation in Practice I 2	Dissertation in Practice III 2



INFORMATION: njcu.edu/CCLDoctorate

APPLICATION DEADLINE: April 15

APPLY ONLINE: njcu.edu/gradadmissions

TUITION AND FEES: njcu.edu/tuition-fees

Ed.D. in Community College Leadership

Faculty

Christine Harrington, Ph.D.

*Associate Professor,
Co-Coordinator*
Ed.D. in Community College Leadership
charrington1@njcu.edu
732-690-2090 (cell)



John Melendez, Ph.D.

*Professor,
Co-Coordinator*
Ed.D. in Community College Leadership
jmelendez@njcu.edu
908-296-6033 (cell)

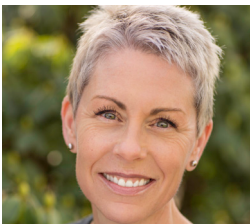
Advisory Board



Karen Archambault
Vice President, Enrollment
Management and Student
Success, Rowan College at
Burlington County, NJ



Debra Bragg
Director,
Community College Research
Initiatives, University of
Washington, WA



Elizabeth Cox Brand
Executive Director of the
Oregon Student Success
Center, OR



Greg DeSantis
Executive Director of the
Connecticut State Colleges &
Universities (CSCU) Student
Success Center and Academic
Initiatives, CT



Yolanda Farmer
Vice President of
Student Development,
Joliet Junior College, IL



Eric Friedman
Executive Vice President
& Provost,
Hudson County
Community College, NJ



Demond Hargrove
Vice President for Student
Development, Union
County College, NJ



Samuel Hirsch
Vice President for Academic
and Student Success,
Community College of
Philadelphia, PA



Hana Lahr
Research Associate,
Community College
Research Center
(CCRC), NY



Mark McCormick
President,
Middlesex County
College, NJ



Anthony Munroe
President,
Essex County
College, NJ



Lawrence Nespoli
Past President of the
New Jersey Council of
County Colleges, NJ



Carlos Nevarez
Chair and Professor,
Graduate & Professional
Studies in Education,
CSU-Sacramento, CA



Paula Pando
President,
Reynolds Community
College, VA



Christopher Shults
Dean of Institutional
Effectiveness and Strategic
Planning, Borough of Manhattan
Community College, NY



Bette Simmons
Vice President of Student
Development & Enrollment
Management, County
College of Morris, NJ



Michael J. Sparrow
Dean, Enrollment
Management and Retention,
Northampton Community
College, PA



David Stout
President,
Brookdale Community
College, NJ