



SOCIAL ENTREPRENEURSHIP PANEL

What Does it Mean?

How Can You Make Money While Making a Difference?

Who Can Start a Social Enterprise?

Wednesday, April 18

6:00 – 8:00 pm

NJCU School of Business, Lecture Hall

Open to students, faculty, and community.



MODERATOR

Libby Jacobson, CFA, MBA, MSSE, is an impact consultant, advisor, strategist, and business developer from the greater Los Angeles who specializes in facilitating the efforts of enterprises that pursue sustainable solutions to the world's most pressing problems.

PANELISTS



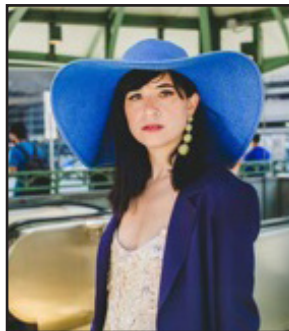
Robyn Levy

Entrepreneur, Lady Boss,
Producer in the Greater
New York City Area



Andrea Reyes

A fair trade advocate,
educator, small business
owner.



Lynn Hazan

Jersey City Blogger,
Creative Entrepreneur,
Social Media Consultant,
Founder, CEO of
ChicpeaJC, Founder,
Content Creators Academy



Berna Tural

Founder, BeNatural.World