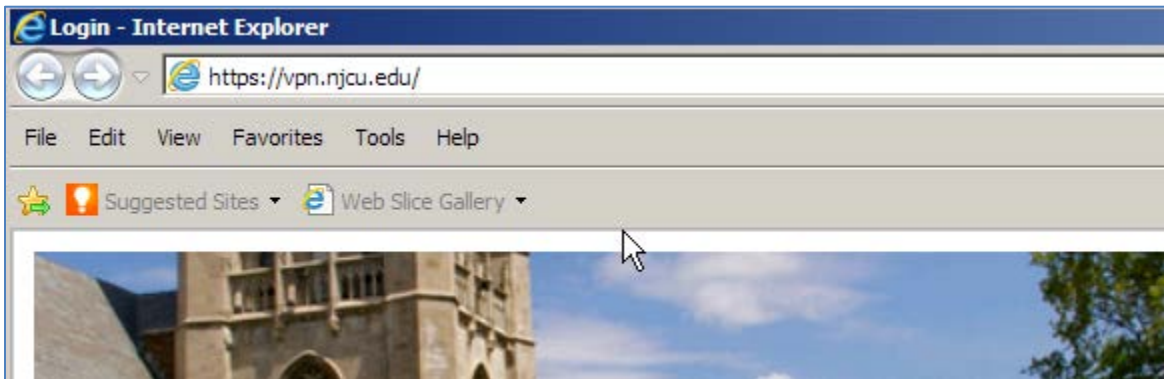


VPN TO NJCU NETWORK CONNECTION INFORMATION - **(Windows 10 Users Only)**

1. On a PC it is important that you setup your VPN connection by using the Internet Explorer Browser (preferably v11 or higher). If you're on a MAC, please set up your VPN connection using Firefox (newest version).
2. Login to the VPN by first going to <http://vpn.njcu.edu/>
3. Follow the screenshots and it should basically walk you through the steps.
4. If you have any other questions or run into any issues, just contact helpdesk@njcu.edu and request assistance in setting up a VPN connection to the NJCU network.

Here are the screenshots, approximately in the order you'll see them and use them.

Login at <http://vpn.njcu.edu/>



Enter your Username and Password for the VPN. (Typically this is also the same as your GothicNet Login)

Login

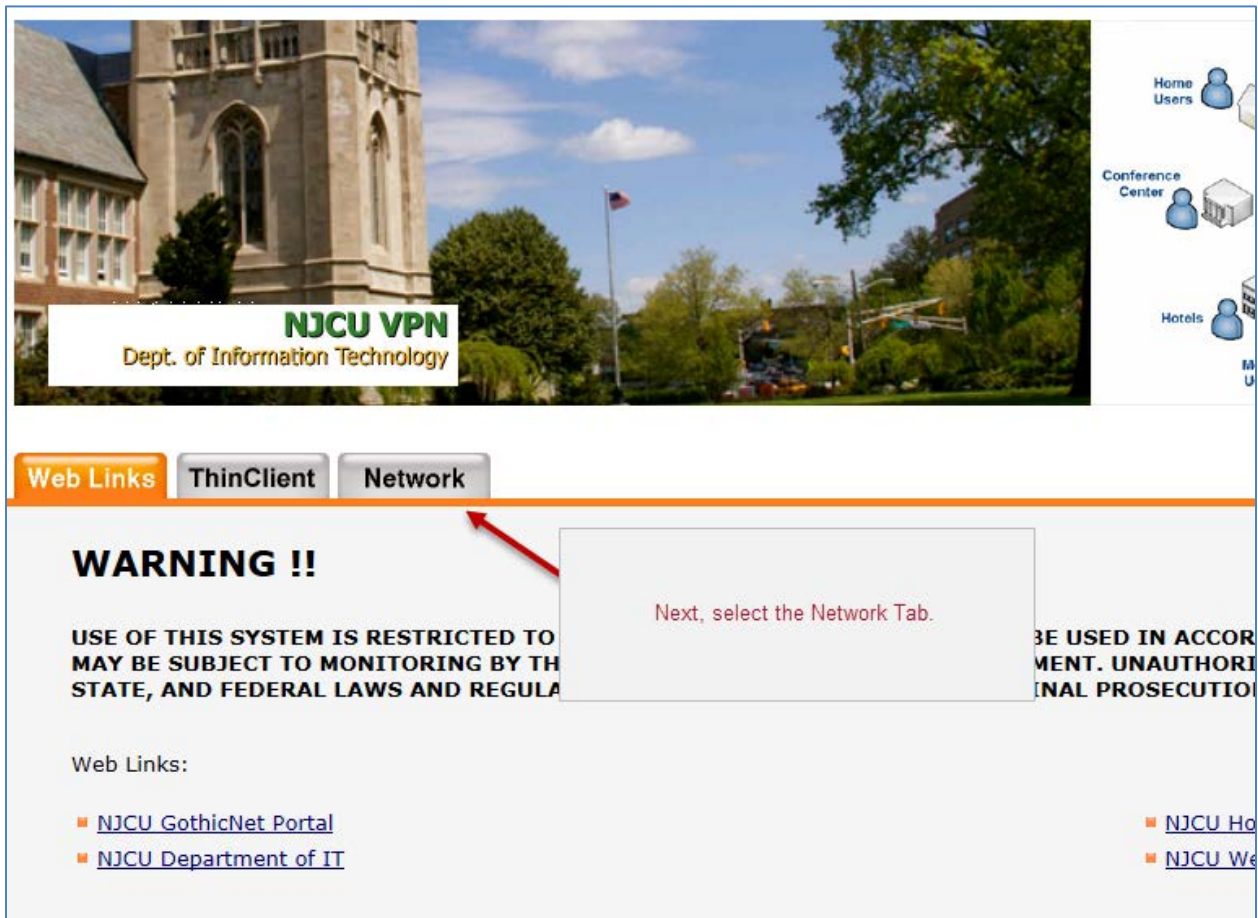
New Jersey City University VPN Access

Username:

Password:

Enter your login credentials.

Select the Network Tab.



NJCU VPN
Dept. of Information Technology

Home Users
Conference Center
Hotels

Web Links ThinClient **Network**

WARNING !!

USE OF THIS SYSTEM IS RESTRICTED TO
MAY BE SUBJECT TO MONITORING BY THE
STATE, AND FEDERAL LAWS AND REGULATIONS

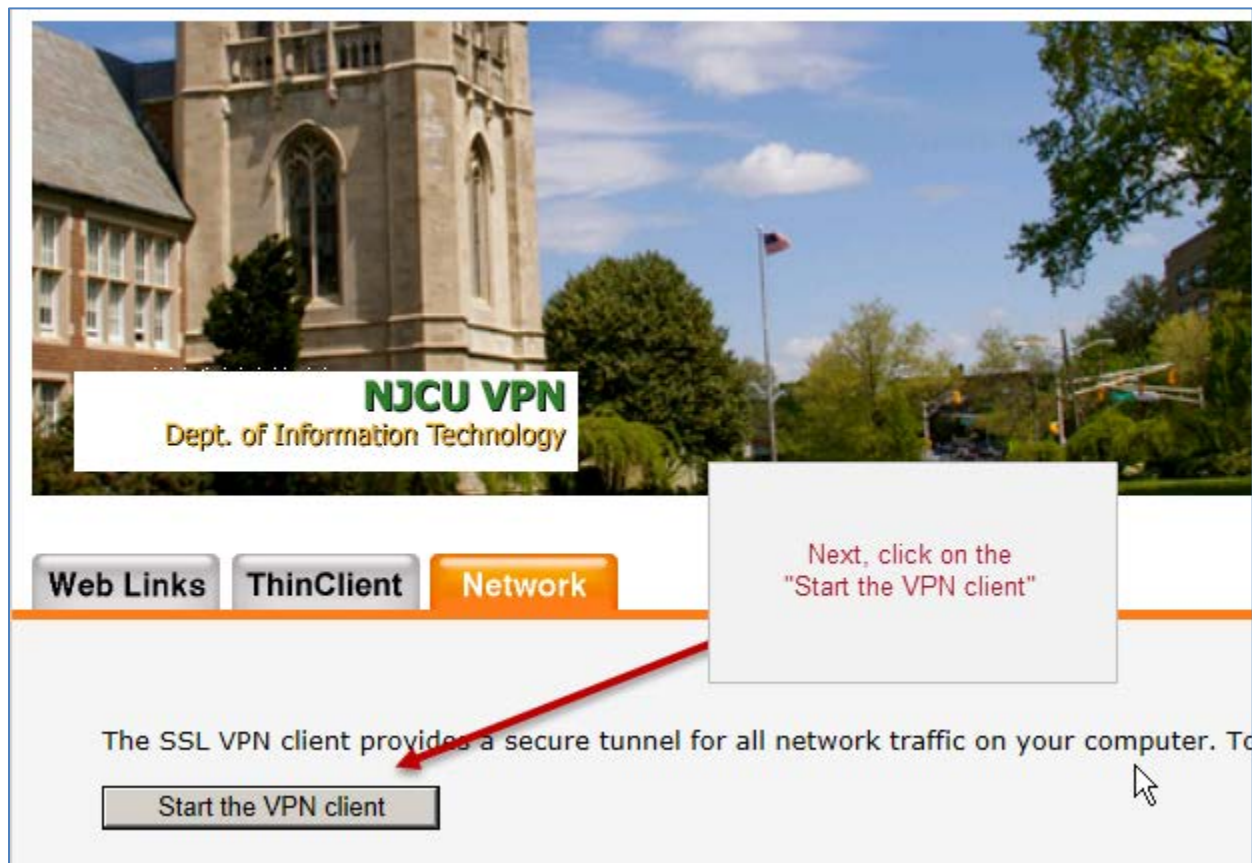
BE USED IN ACCORDANCE WITH
POLICY. UNAUTHORIZED USE MAY
RESULT IN DISCIPLINARY ACTION OR
CIVIL PROSECUTION.

Web Links:

- [NJCU GothicNet Portal](#)
- [NJCU Department of IT](#)
- [NJCU Home](#)
- [NJCU Web](#)

Next, select the Network Tab.

Click the Start button.



The screenshot shows a web page for NJCU VPN. At the top, there is a banner image of a university building with a tower. Below the banner is a white box containing the text "NJCU VPN" in green and "Dept. of Information Technology" in black. Below this is a navigation bar with three buttons: "Web Links", "ThinClient", and "Network". The "Network" button is highlighted in orange. Below the navigation bar is a paragraph of text: "The SSL VPN client provides a secure tunnel for all network traffic on your computer. To". Below the text is a button labeled "Start the VPN client". A red arrow points from a callout box to the "Start the VPN client" button. The callout box contains the text "Next, click on the 'Start the VPN client'". A mouse cursor is visible near the bottom right of the page.

NJCU VPN
Dept. of Information Technology

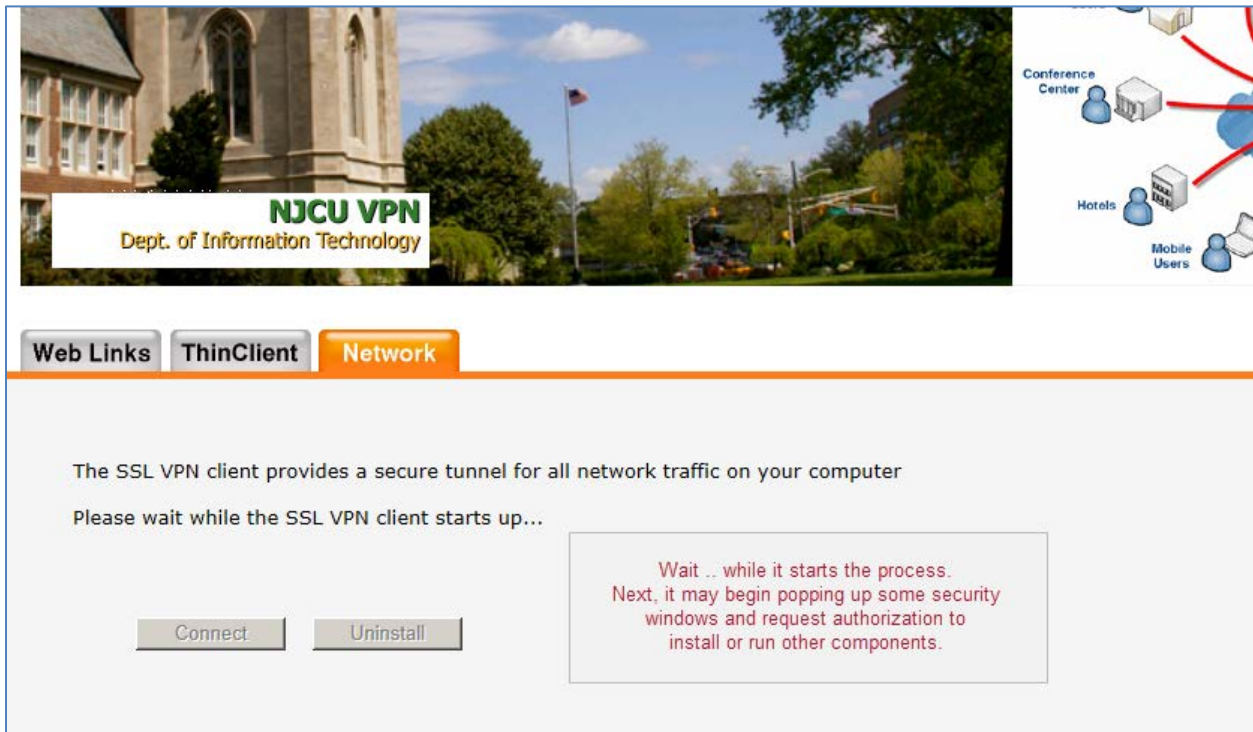
Web Links ThinClient **Network**

Next, click on the "Start the VPN client"

The SSL VPN client provides a secure tunnel for all network traffic on your computer. To

Start the VPN client

Wait while it begins the connection process.



The screenshot displays the NJCU VPN web interface. At the top left, there is a banner image of a building with the text "NJCU VPN Dept. of Information Technology". To the right is a network diagram showing "Conference Center", "Hotels", and "Mobile Users" connected to a central server. Below the banner are three tabs: "Web Links", "ThinClient", and "Network" (which is highlighted). The main content area contains the following text:

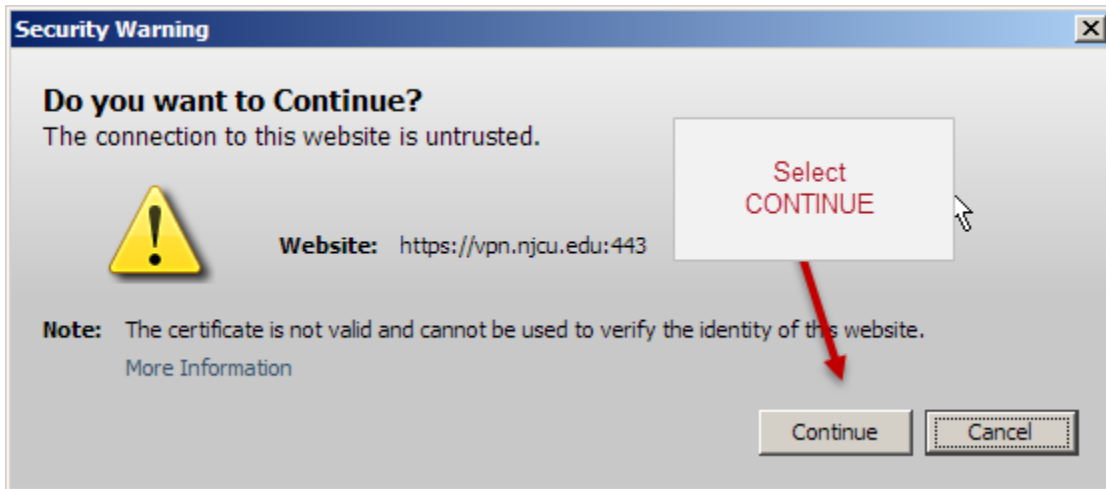
The SSL VPN client provides a secure tunnel for all network traffic on your computer

Please wait while the SSL VPN client starts up...

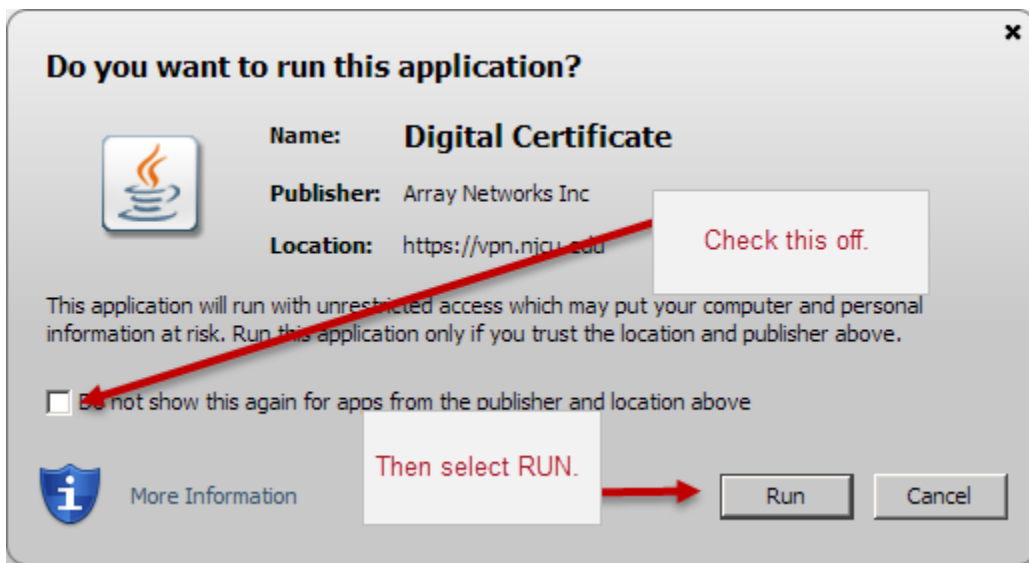
Below this text are two buttons: "Connect" and "Uninstall". To the right of these buttons is a text box with the following instructions:

Wait .. while it starts the process.
Next, it may begin popping up some security windows and request authorization to install or run other components.

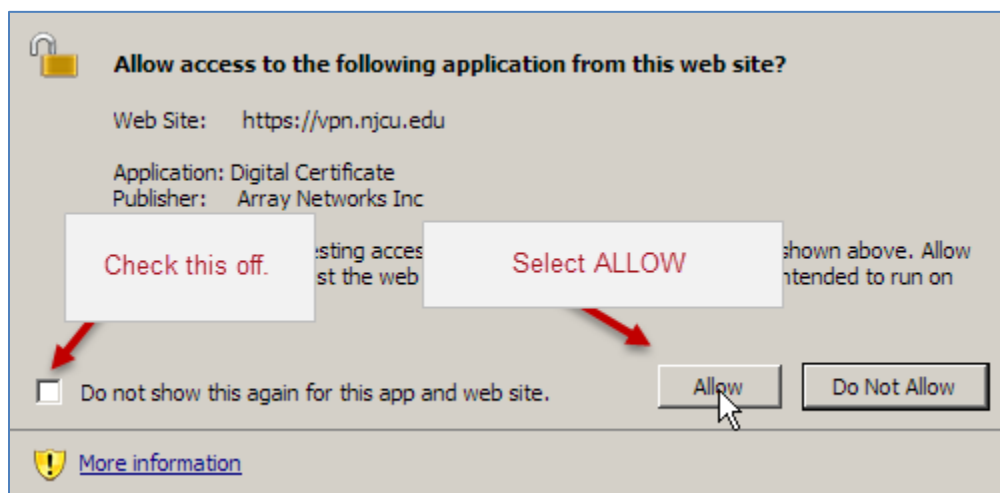
Select CONTINUE if you are asked ...



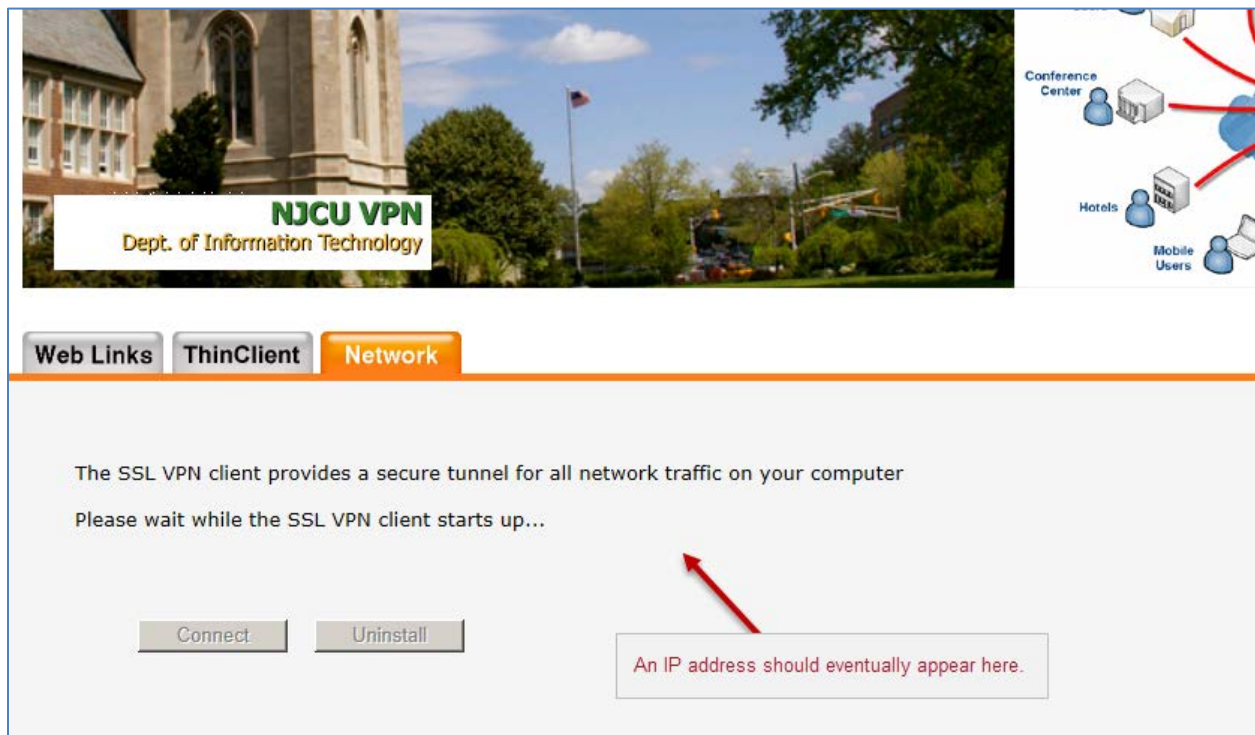
Next .. (if asked)



Next .. (if asked)



Then, wait for the connection to finish. You should see an IP address



Once you see an IP address appear, you're good to go.

Next, simply open a Remote Desktop Session and connect to your NJCU computer

Department of Information Technology at NJCU

Help requests should be sent to helpdesk@njcu.edu